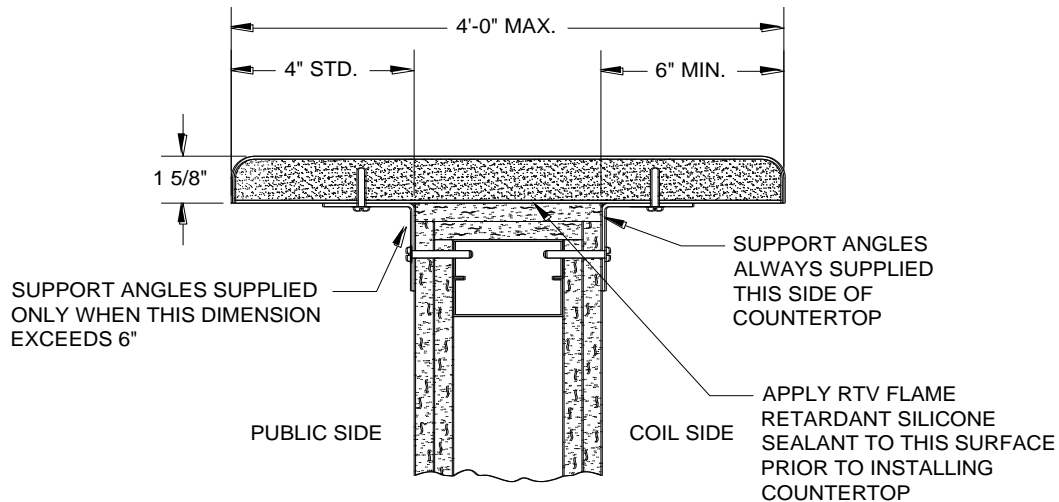
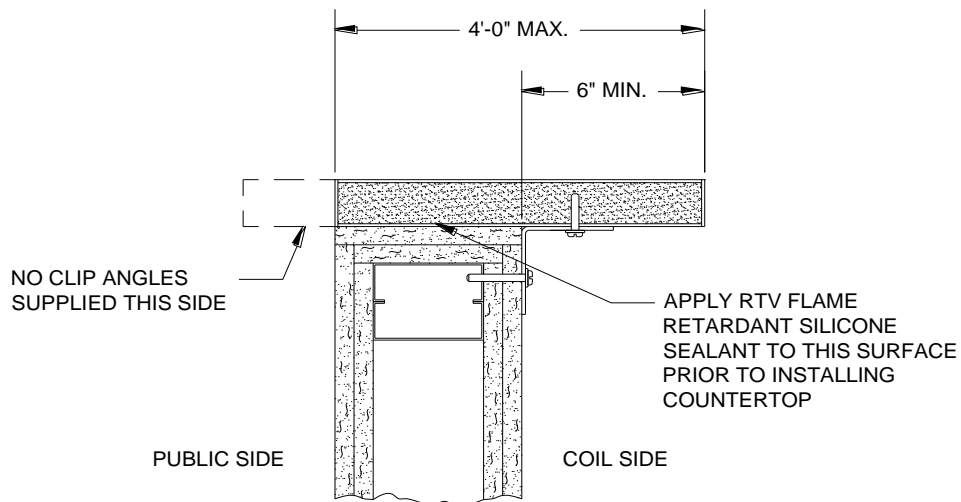


Note:

The details shown below illustrate standard countertop configurations. When projections beyond either side of the wall exceed 6" additional support must be supplied beneath the countertop by others.



STANDARD UNIT CONFIGURATION



FOR UNITS THAT EXTEND LESS THAN 6" TO FLUSH WITH THE WALL ON THE PUBLIC SIDE.

Before permanently installing the countertop into the opening it is advisable to check it for proper fit. Unpack the countertop from the shipping crate and lay it on a clean flat surface. Be careful to properly support countertops in the center when lifting to prevent cracking especially if they are long and narrow. Measure the opening size and check this dimension against the drawings provided and the actual size of

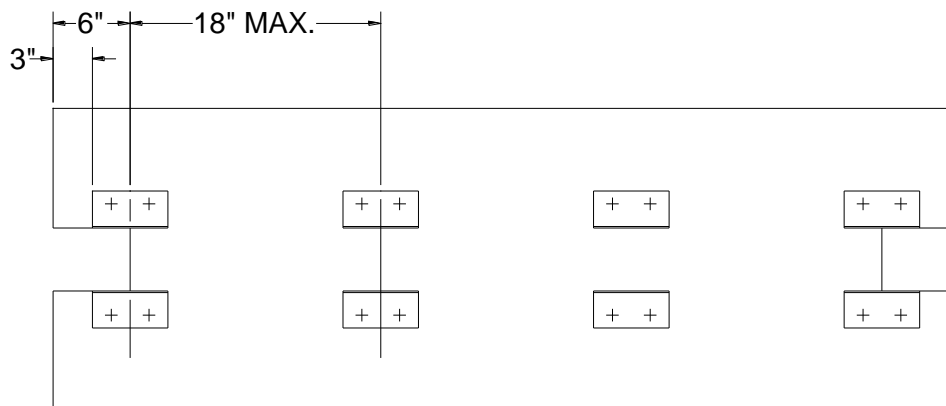
the countertop. The standard countertop is built to allow a 1/8" clearance dimension between the edges of the countertop at all points where it contacts the wall. The portion of the countertop projecting through the wall opening should be 1/4" less than the actual wall opening. The countertop can now be placed into the opening to check the fit.

Remove the countertop and begin preparation of the opening for the permanent installation. The upper face of the wall opening on which the countertop will sit should be smooth, level and free of dust, dirt or other debris. When ready to install the countertop apply the flame retardant silicone sealant, supplied with the hardware, to the upper face of the wall. This material should be applied using a standard caulking gun and applying a generous bead down the entire length of the wall opening. The number of beads required should be determined by the thickness of the wall. Please be careful to hold the beads back from the edge of the opening so the sealing material does not squeeze out and run down on to the face of the finish wall. As soon as the sealant is applied the countertop should be installed, adjusted and leveled before the sealant begins to set up. A block of wood and a rubber mallet may be used to gently tap on top of the countertop to set it in place and assure proper contact and adhesion to the silicone sealant. Use caution in this procedure so as not to mar or damage the laminate surface.

Next install the support angles beneath the countertop at the locations shown in the details. These angles and fasteners are supplied as part of the hardware package and should be installed according to the layout in the details shown below. When fastening the clip angles to the underside of the countertop be certain to use the shorter fasteners supplied. Do not over-tighten these fasteners as the core material will strip out very easily. A small amount of wood glue may be applied to these fasteners to hold them securely in position. Additional support must be provided by others when the projection dimension on either side of the opening exceeds 6" or the countertop may become unstable in the opening.

CLIP ANGLE LAYOUT – UNDERSIDE OF COUNTERTOP SHOWN

"H" type countertop is shown; layout is typical for "T" and rectangular configurations also.



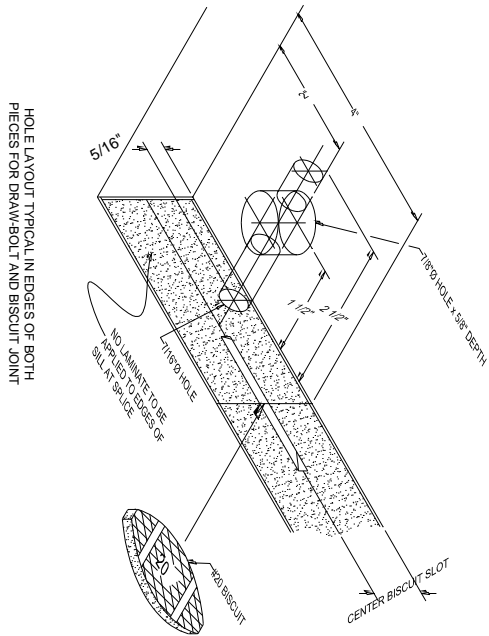
Note:

When overhang on the public side is less than 6" the clip angles are not supplied because they may be visible and detract from the overall appearance of the installation. Coil side clip angles are always supplied and must be used to properly attach the countertop to the wall.

TWO-PIECE LAMINATED COUNTERTOP INSTALLATION

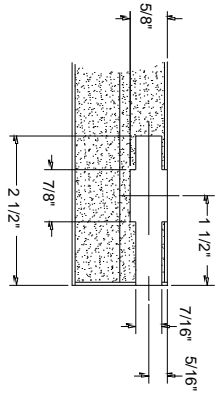
Please read these instructions carefully before attempting countertop installation!

1. Lay countertop sections face side down, on the floor in front of the coil side of the opening. Use cardboard, foam or some other material to protect the face of the countertop from being scratched. If a "tee" shaped countertop is being used the wider side of the countertop should be toward the opening. Whatever material is used it should allow the two sections of the countertop to be lined up flat with each other so the Tite-joint fasteners and the biscuit joints can be installed. Measure the countertop and the opening to verify that the countertop will fit properly. The length of the countertop where it fits between the walls should be about ¼ inch less than the width of the opening.
2. Assemble the two halves of the countertop with the Tite-joint fasteners and the biscuit joints as shown in the drawing on the next page of this document. The biscuits should fit snugly in the recesses provided in the countertop to properly align the two halves. If the biscuits do not fit tightly, they may be moistened with a small amount of water in order to obtain a snug fit. A small amount of woodworkers' glue may be applied to the biscuits before inserting them into the slots if desired. When installing the tite-joint fasteners tighten them only enough to hold them in place when the countertop is turned over. These will be tightened after the countertop is mounted in the opening. A piece of masking tape can also be placed over the openings for the fasteners to prevent the locking sleeves from falling out when the countertop is turned over. **Be extremely careful when handling the countertop with the Tite-joint fasteners in place!** Any bending or twisting at the splice may fracture the laminate and/or the substrate. A set of clamps and wood blocking should be used on either side of the countertop to hold the seam rigid until it can be lifted into the opening. These may be applied over the Tite-joint fasteners because they will be removed once the countertop is in the opening. **Do not over-tighten these fasteners.**
3. Next, apply the adhesive provided to the opening in the wall. This will secure the countertop in position after it is in place. Use enough adhesive to allow some give so the two halves of the countertop can be lined up to make a smooth, even joint. Be careful to keep the adhesive back slightly from the edges of the opening so it does not squeeze out once the countertop is installed. Carefully lift up the countertop, slowly turn it face side up, and position it in the opening. **NOTE: Be extremely careful when handling the countertop.** Do not bend it at the splice or the laminate and the substrate may fracture at the Tite-joint fasteners. Once the countertop is in the opening the clamps and wood blocking can be removed until the seam is tightened.
4. Line up the two halves of the countertop at the splice and then begin tightening the Tite-joint fasteners. **Do not over-tighten these fasteners!** Over-tightening will cause the laminate to buckle and/or the substrate to fracture. These are only used to pull the countertop halves together snugly at the seam until the adhesive sets up. Once the countertop is positioned properly in the opening and the seam is tight the wood blocking and clamps can be reapplied to the countertop to maintain seam alignment. The adhesive should be allowed to cure, preferably overnight, before installing the countertop clip angles to the countertop and wall or the counter door on the opening.



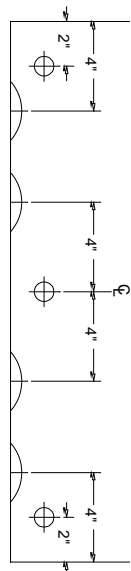
HOLE LAYOUT TYPICAL IN EDGES OF BOTH
 PIECES FOR DRAW-BOLT AND BISCUIT JOINT

HOLE LAYOUT AND DIMENSION

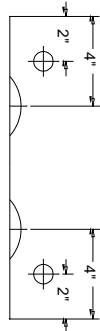


FASTENER LAYOUT

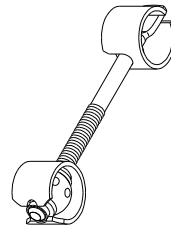
THREE TITE JOINT FASTENERS AND
 FOUR #20 BISCUIT JOINTS OVER 24" WIDE



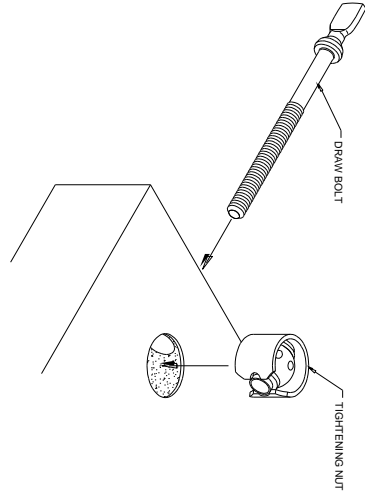
TWO TITE JOINT FASTENERS AND
 TWO #20 BISCUIT JOINTS UP TO 24" WIDE



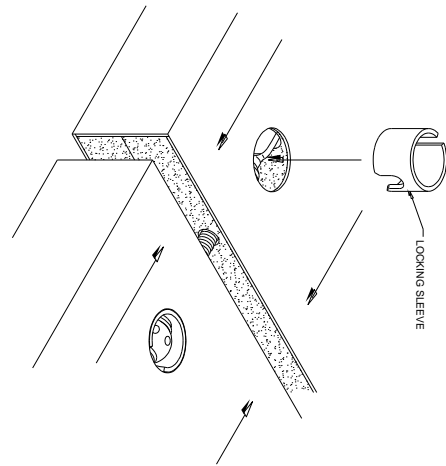
KNAPE & VOGT
 #516 TITE-JOINT FASTENER



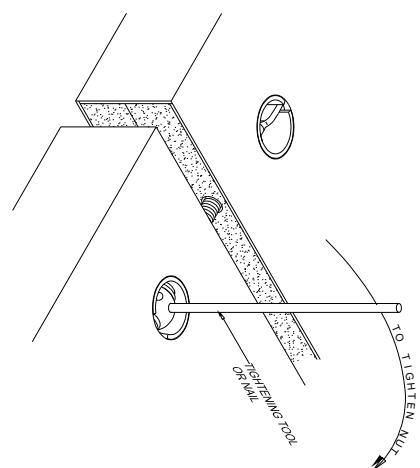
1. INSERT TIGHTENING NUT AND THREAD DRAW BOLT INTO NUT



2. JOIN BOTH SILLS TOGETHER AND INSERT
 LOCKING SLEEVE



3. TIGHTEN NUT WITH TIGHTENING TOOL OR NAIL



Field Over-Laminating Instructions for UL Classified Countertop

Cornell's UL classified laminated countertop assemblies may be field over-laminated in order to provide a seamless surface between a Cornell UL classified countertop and non fire rated countertops that will be installed adjacent to these units. The classified countertop assembly provided by Cornell shall not be modified in any way other than preparation of the existing surfaces in the field that are required to be over-laminated. Acceptance of this procedure is subject to approval by the Authority Having Jurisdiction (AHJ) and it is advisable to check the acceptability prior to proceeding with the over-lamination process.

The materials used and field installation of the over-laminate must be applied according to the following requirements and installation instructions in order to maintain the original listing of the UL classified countertop.

The following are the only acceptable laminate materials that can be used in the over-lamination process. All materials used are to be maximum .050 thick general purpose laminate provided by the following manufacturers.

"Wilsonart" general purpose laminate manufactured by the Ralph Wilson Plastic Co.

"Formica" general purpose laminate manufactured by Formica Corporation

"Nevamar" general purpose laminate manufactured by Panolam Industries

"Pionite" general purpose laminate manufactured by Panolam Industries

The following are the only acceptable adhesives to be used to apply the second layer of laminate to first layer of the UL listed countertop. Wilsonart #810 or #811 contact adhesive or Borden's catalog # PVA-104A/M304L.

Important:

All surfaces intended to be over-laminated in the field must be prepared to insure proper adhesion of the second layer of laminate to the first. The original layer of laminate applied to the classified countertop should be thoroughly sanded to roughen the surface to allow a proper bond with the new surface. It should be clean, free of oil or grease, and uniform in thickness prior to applying the second laminate layer. The adhesive listed above should be applied to the laminate surfaces according to the manufacturer's instructions and the second layer of laminate should then be applied over the first layer on the UL classified countertop and the adjoining non-rated countertop supplied by others.

Please Note:

The job site contractor applying the over- laminate surface will be held responsible for de-lamination of the field applied material due improper preparation or installation of the over-laminated surfaces. Failure to use the required materials and procedures listed above will result in voiding of the UL classification of the fire rated countertop assembly.