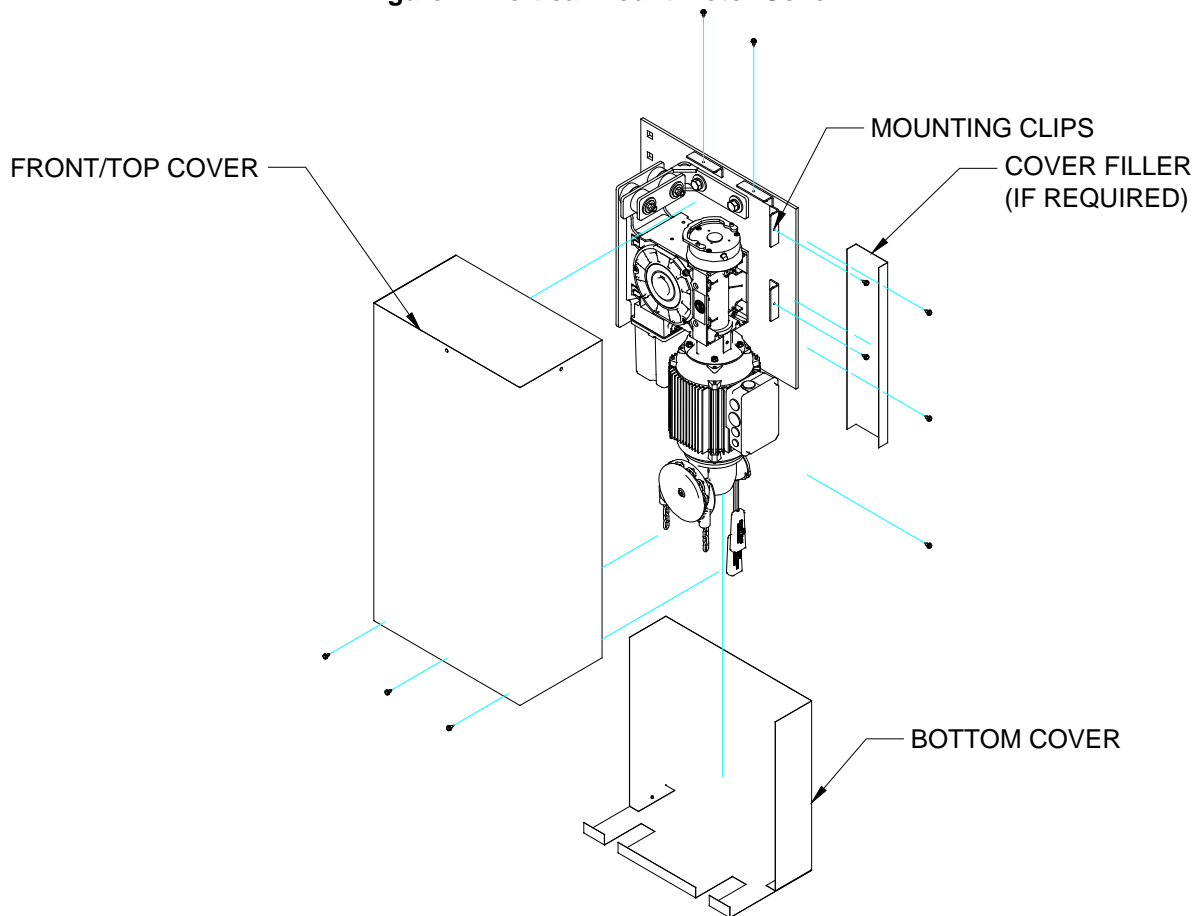


Preferred door solutions.[®]
COOKSON
GFA Motor Cover
Instructions

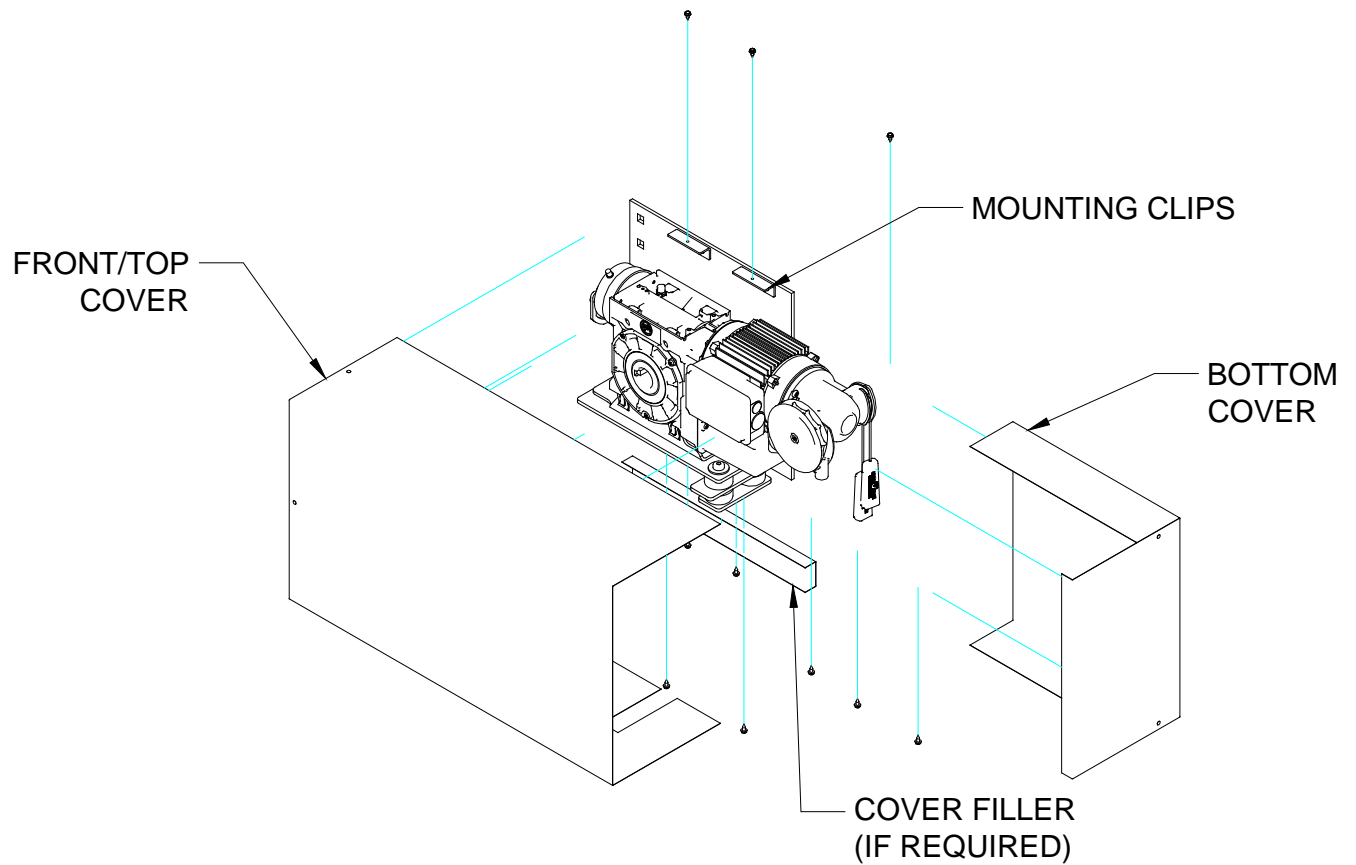
The instructions contained below are supplemental to the instructions received with your door/operator. Please review those instructions for any safety instructions, freight receiving instructions, etc prior to use of these instructions.

Figure 1 –Vertical Mount Motor Cover



1. After the door has been installed and all of the wiring has been completed, the motor cover may be installed.
2. If required, install the **COVER FILLER**, attaching it to the **MOUNTING CLIPS** on the front of the bracket using (2) provided 10-16 x 1/2" tap screws. Ensure that the **COVER FILLER** piece does not extend above the **MOUNTING CLIPS** at the top of the bracket.
3. Installed the **FRONT/TOP COVER**, attaching it to the **MOUNTING CLIPS** at the top of the bracket, and either the **COVER FILLER** or **MOUNTING CLIPS** on the front of the bracket.
4. From below, slide the **BOTTOM COVER** into place in between the **COVER FILLER** piece (if required) and the bracket. Two precut slots have been cut in the **BOTTOM COVER** to allow the motor wiring to pass through. One slot should be used for the encoder/brake cable and the other slot should be used for the high voltage cable. It is important to keep these separate to reduce interference.
5. Secure the **BOTTOM COVER** to the **FRONT/TOP COVER** as shown to secure it in place.

Figure 2 –Horizontal Mount Motor Cover



1. After the door has been installed and all of the wiring has been completed, the motor cover may be installed.
2. If required, install the **COVER FILLER**, attaching it to the **MOUNTING CLIPS** on the bottom of the bracket using (2) provided 10-16 x 1/2" tap screws.
3. Installed the **FRONT/TOP COVER**, attaching it to the **MOUNTING CLIPS** at the top of the bracket, and either the **COVER FILLER** or **MOUNTING CLIPS** on the bottom of the bracket. Two precut slots have been cut in the **FRONT/TOP COVER** to allow the motor wiring to pass through. One slot should be used for the encoder/brake cable and the other slot should be used for the high voltage cable. It is important to keep these separate to reduce interference.
4. From the front, slide the **BOTTOM COVER** into place in between the **COVER FILLER** piece (if required) and the bracket.
5. Secure the **BOTTOM COVER** to the **FRONT/TOP COVER** as shown to secure it in place.