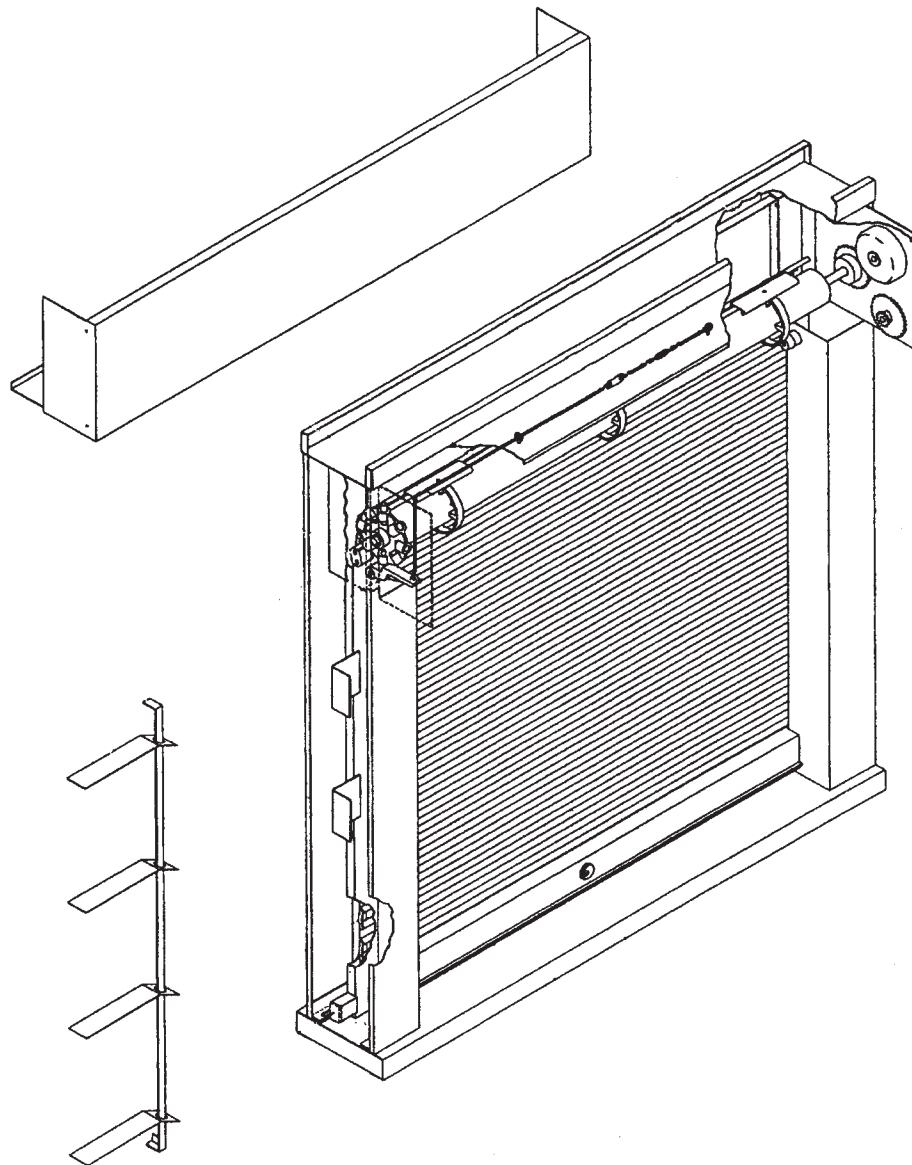


# Preferred door solutions.<sup>®</sup> COOKSON

## Operation & Maintenance Manual

Products: Package Unit



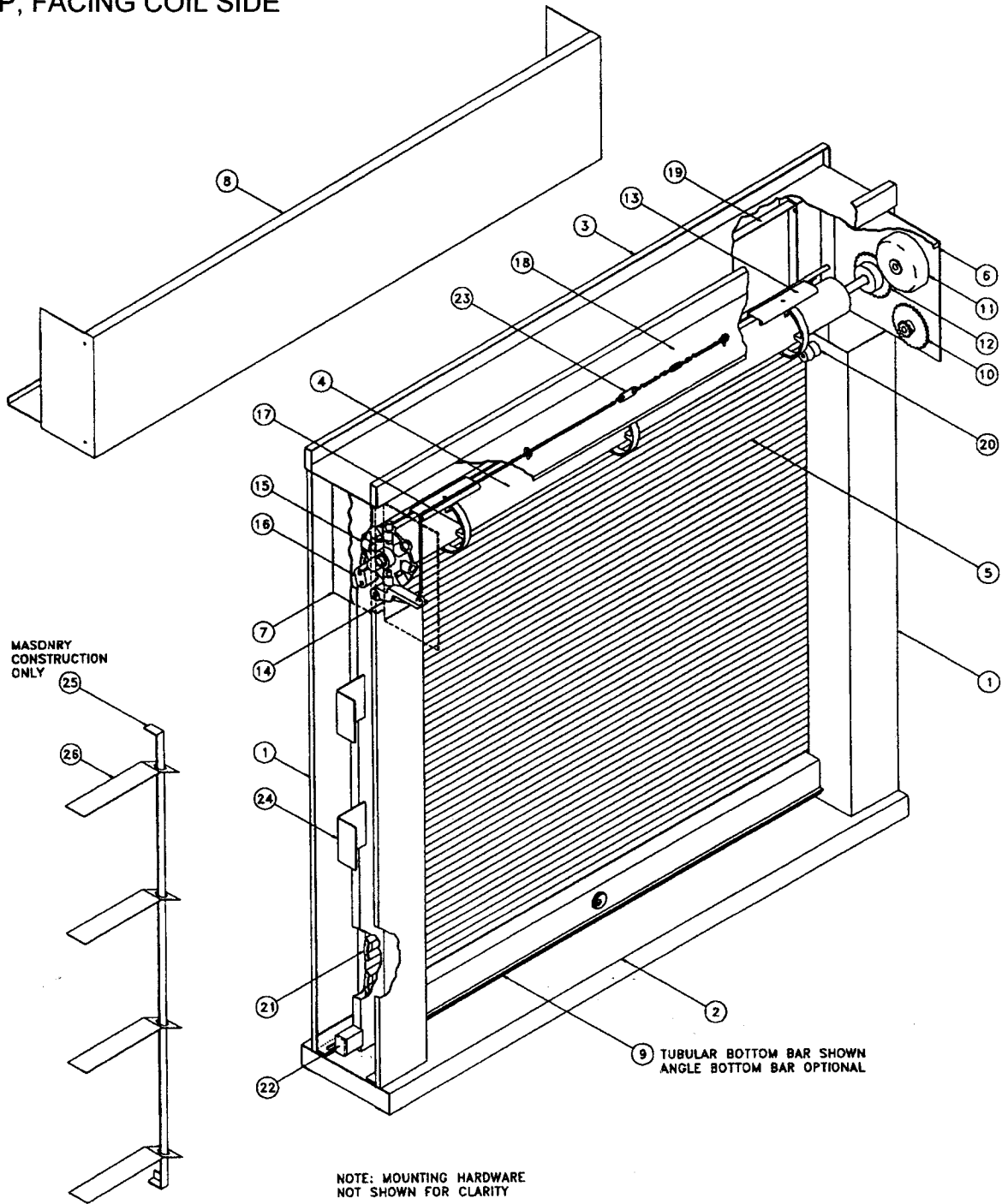
Preferred door solutions.<sup>®</sup>  
**COOKSON**

For more information...  
Contact the Service Department  
Please Call 800-233-8366  
Or Fax 800-526-0841

Crestwood Industrial Park, Mountaintop, PA 18707

# PARTS LIST - PACKAGE UNIT

PUSH-UP, FACING COIL SIDE



1	JAMBS	9	BOTTOM BAR	20	RUBBER STOPPERS
2	SILL ASSEMBLY	13	FASTENING SECTION SLATS	21	ENDLOCKS (RIVETED TO SLATS)
3	HEAD ASSEMBLY	15	ADJUSTING WHEEL WITH PIN	22	PLASTER GUARDS
4	BARREL (COUNTERBALANCE SHAFT)	13	RINGS	24	DRYWALL ANCHORS
5	CURTAIN SLATS	18	TOP CLOSURE	25	MASONRY MOUNTING ANGLE
8	HOOD	19	FASCIA	26	MASONRY ANCHORS

# **PACKAGE UNIT INSTALLATION INSTRUCTIONS**

**(Push-up, Facing Coil Side)**

**NOTE:** This unit must be installed as wall is being built.

- STEP 1** Before beginning installation remove all packaging material from the unit and test the curtain to see that it operated properly. Check over entire unit to see that there is no damage and that unit is square. The unit may be tested at this time if desired for automatic closing by releasing the tension on the fusible link chain. **(Refer to the section below on Testing and Resetting.)**

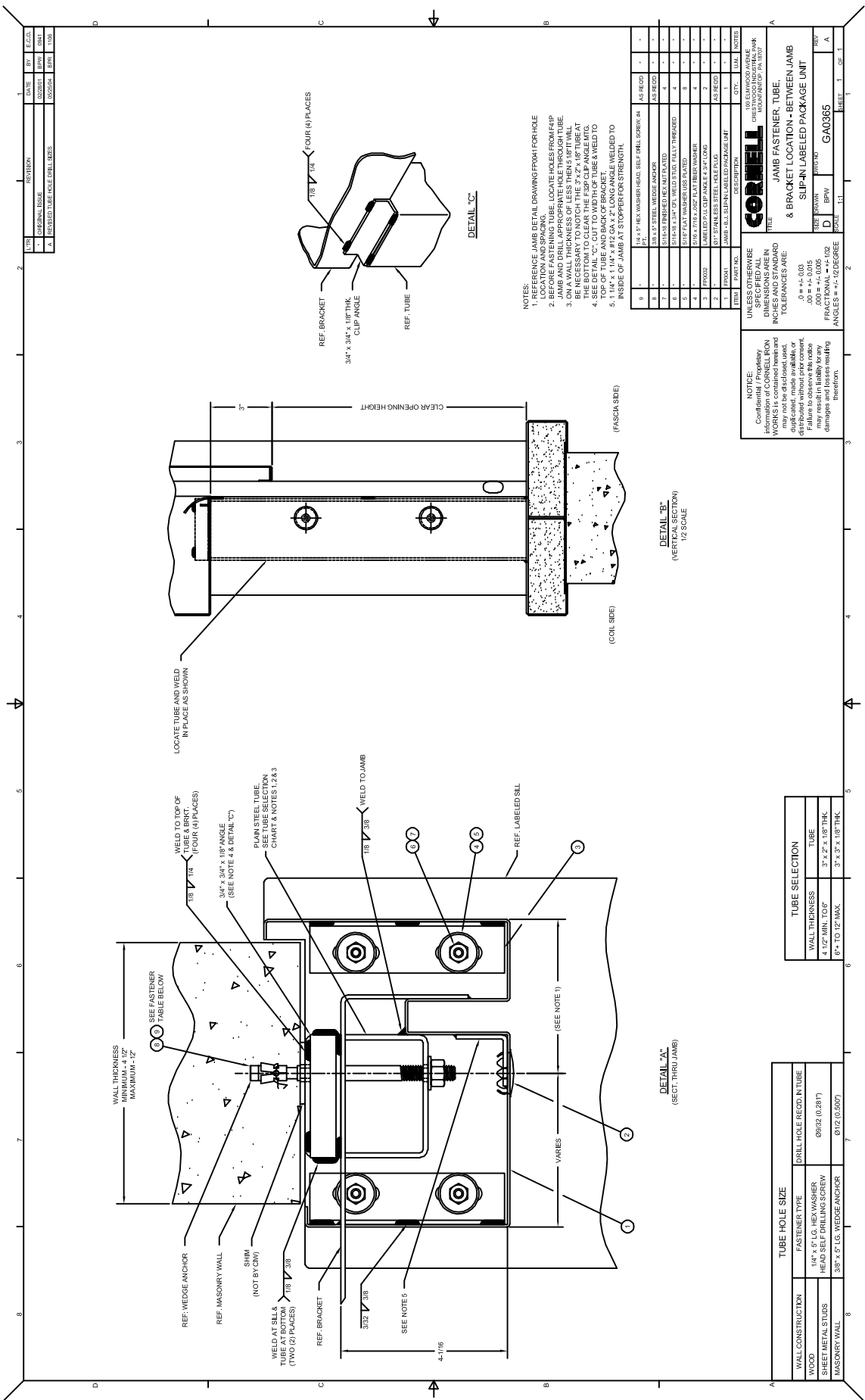
**NOTE:** It will be necessary to remove the hood to reset the unit if it is tested.

- STEP 2** The wall or stud framing at this point should be built up the point where it is the proper height to support the unit at the underside of the sill. Compare this dimension against the dimension shown on the shop drawing to see that the two match. Next check this portion of the wall to see that it is level so unit will not have to be shimmed.

The unit may now be lifted into position at the opening and fastened in position as shown on the enclosed details.

**NOTE:** Do not lift unit at the center of the sill or coil area! Lift only by the side jambs to prevent damage.

- STEP 3** Once the unit is securely fastened into the wall construction it should again be tested for proper operation. Run the curtain up and down a few times to see that it operated smoothly without binding. The spring tension is pre-set at the factory and should not require further adjustment. When properly adjusted the curtain should stay down on the sill when closed, pull up slightly against the stop bumpers when open and be slightly heavy through the middle. The spring tension may be adjusted if desired by following the procedure outlined below for testing and resetting.



- NOTES:
1. REFERENCE JAMB DETAIL DRAWING FROM FOR HOLE
  2. BEFORE FASTENING TUBE, LOCATE HOLES FROM JAMB AND DRILL APPROPRIATE HOLE THROUGH TUBE.
  3. ON A WALL THICKNESS OF LESS THAN 18" IT WILL BE NECESSARY TO DRILL THROUGH THE BOTTOM TO CLEAR THE 1/2" CLIP ANGLE WTS.
  4. SEE DETAIL 'C', CUT TO WIDTH OF TUBE & WELD TO INSIDE OF JAMB AT STOPPER FOR STRENGTH.
  5. 1 1/4" x 1 1/4" x #12 GA. 2" LONG ANGLE WELDED TO INSIDE OF JAMB AT STOPPER FOR STRENGTH.

ITEM	DESCRIPTION	QTY.	AS REQ'D
1	1/4" x 5/8" HEX WASHER HEAD SELF DRILL SCREW #4	4	AS REQ'D
2	3/8" x 2" STEEL WEDGE ANCHOR	4	AS REQ'D
3	1/4" x 5/8" L.G. HEX WASHER	4	AS REQ'D
4	3/8" x 2" L.G. SELF DRILLING SCREW	4	AS REQ'D
5	3/8" x 2" L.G. WEDGE ANCHOR	4	AS REQ'D
6	1/8" x 1/4" CLIP ANGLE #18	4	AS REQ'D
7	PLAIN STEEL TUBE	1	AS REQ'D
8	1/8" x 1/4" CLIP ANGLE #18	4	AS REQ'D
9	3/8" x 2" L.G. WEDGE ANCHOR	4	AS REQ'D
10	1/4" x 5/8" L.G. HEX WASHER	4	AS REQ'D
11	1/8" x 1/4" CLIP ANGLE #18	4	AS REQ'D
12	3/8" x 2" L.G. WEDGE ANCHOR	4	AS REQ'D
13	1/4" x 5/8" L.G. HEX WASHER	4	AS REQ'D
14	1/8" x 1/4" CLIP ANGLE #18	4	AS REQ'D
15	PLAIN STEEL TUBE	1	AS REQ'D
16	1/8" x 1/4" CLIP ANGLE #18	4	AS REQ'D
17	3/8" x 2" L.G. WEDGE ANCHOR	4	AS REQ'D
18	1/4" x 5/8" L.G. HEX WASHER	4	AS REQ'D
19	1/8" x 1/4" CLIP ANGLE #18	4	AS REQ'D
20	PLAIN STEEL TUBE	1	AS REQ'D
21	1/8" x 1/4" CLIP ANGLE #18	4	AS REQ'D
22	3/8" x 2" L.G. WEDGE ANCHOR	4	AS REQ'D
23	1/4" x 5/8" L.G. HEX WASHER	4	AS REQ'D
24	1/8" x 1/4" CLIP ANGLE #18	4	AS REQ'D
25	PLAIN STEEL TUBE	1	AS REQ'D
26	1/8" x 1/4" CLIP ANGLE #18	4	AS REQ'D
27	3/8" x 2" L.G. WEDGE ANCHOR	4	AS REQ'D
28	1/4" x 5/8" L.G. HEX WASHER	4	AS REQ'D
29	1/8" x 1/4" CLIP ANGLE #18	4	AS REQ'D
30	PLAIN STEEL TUBE	1	AS REQ'D
31	1/8" x 1/4" CLIP ANGLE #18	4	AS REQ'D
32	3/8" x 2" L.G. WEDGE ANCHOR	4	AS REQ'D
33	1/4" x 5/8" L.G. HEX WASHER	4	AS REQ'D
34	1/8" x 1/4" CLIP ANGLE #18	4	AS REQ'D
35	PLAIN STEEL TUBE	1	AS REQ'D
36	1/8" x 1/4" CLIP ANGLE #18	4	AS REQ'D
37	3/8" x 2" L.G. WEDGE ANCHOR	4	AS REQ'D
38	1/4" x 5/8" L.G. HEX WASHER	4	AS REQ'D
39	1/8" x 1/4" CLIP ANGLE #18	4	AS REQ'D
40	PLAIN STEEL TUBE	1	AS REQ'D
41	1/8" x 1/4" CLIP ANGLE #18	4	AS REQ'D
42	3/8" x 2" L.G. WEDGE ANCHOR	4	AS REQ'D
43	1/4" x 5/8" L.G. HEX WASHER	4	AS REQ'D
44	1/8" x 1/4" CLIP ANGLE #18	4	AS REQ'D
45	PLAIN STEEL TUBE	1	AS REQ'D
46	1/8" x 1/4" CLIP ANGLE #18	4	AS REQ'D
47	3/8" x 2" L.G. WEDGE ANCHOR	4	AS REQ'D
48	1/4" x 5/8" L.G. HEX WASHER	4	AS REQ'D
49	1/8" x 1/4" CLIP ANGLE #18	4	AS REQ'D
50	PLAIN STEEL TUBE	1	AS REQ'D
51	1/8" x 1/4" CLIP ANGLE #18	4	AS REQ'D
52	3/8" x 2" L.G. WEDGE ANCHOR	4	AS REQ'D
53	1/4" x 5/8" L.G. HEX WASHER	4	AS REQ'D
54	1/8" x 1/4" CLIP ANGLE #18	4	AS REQ'D
55	PLAIN STEEL TUBE	1	AS REQ'D
56	1/8" x 1/4" CLIP ANGLE #18	4	AS REQ'D
57	3/8" x 2" L.G. WEDGE ANCHOR	4	AS REQ'D
58	1/4" x 5/8" L.G. HEX WASHER	4	AS REQ'D
59	1/8" x 1/4" CLIP ANGLE #18	4	AS REQ'D
60	PLAIN STEEL TUBE	1	AS REQ'D
61	1/8" x 1/4" CLIP ANGLE #18	4	AS REQ'D
62	3/8" x 2" L.G. WEDGE ANCHOR	4	AS REQ'D
63	1/4" x 5/8" L.G. HEX WASHER	4	AS REQ'D
64	1/8" x 1/4" CLIP ANGLE #18	4	AS REQ'D
65	PLAIN STEEL TUBE	1	AS REQ'D
66	1/8" x 1/4" CLIP ANGLE #18	4	AS REQ'D
67	3/8" x 2" L.G. WEDGE ANCHOR	4	AS REQ'D
68	1/4" x 5/8" L.G. HEX WASHER	4	AS REQ'D
69	1/8" x 1/4" CLIP ANGLE #18	4	AS REQ'D
70	PLAIN STEEL TUBE	1	AS REQ'D
71	1/8" x 1/4" CLIP ANGLE #18	4	AS REQ'D
72	3/8" x 2" L.G. WEDGE ANCHOR	4	AS REQ'D
73	1/4" x 5/8" L.G. HEX WASHER	4	AS REQ'D
74	1/8" x 1/4" CLIP ANGLE #18	4	AS REQ'D
75	PLAIN STEEL TUBE	1	AS REQ'D
76	1/8" x 1/4" CLIP ANGLE #18	4	AS REQ'D
77	3/8" x 2" L.G. WEDGE ANCHOR	4	AS REQ'D
78	1/4" x 5/8" L.G. HEX WASHER	4	AS REQ'D
79	1/8" x 1/4" CLIP ANGLE #18	4	AS REQ'D
80	PLAIN STEEL TUBE	1	AS REQ'D
81	1/8" x 1/4" CLIP ANGLE #18	4	AS REQ'D
82	3/8" x 2" L.G. WEDGE ANCHOR	4	AS REQ'D
83	1/4" x 5/8" L.G. HEX WASHER	4	AS REQ'D
84	1/8" x 1/4" CLIP ANGLE #18	4	AS REQ'D
85	PLAIN STEEL TUBE	1	AS REQ'D
86	1/8" x 1/4" CLIP ANGLE #18	4	AS REQ'D
87	3/8" x 2" L.G. WEDGE ANCHOR	4	AS REQ'D
88	1/4" x 5/8" L.G. HEX WASHER	4	AS REQ'D
89	1/8" x 1/4" CLIP ANGLE #18	4	AS REQ'D
90	PLAIN STEEL TUBE	1	AS REQ'D
91	1/8" x 1/4" CLIP ANGLE #18	4	AS REQ'D
92	3/8" x 2" L.G. WEDGE ANCHOR	4	AS REQ'D
93	1/4" x 5/8" L.G. HEX WASHER	4	AS REQ'D
94	1/8" x 1/4" CLIP ANGLE #18	4	AS REQ'D
95	PLAIN STEEL TUBE	1	AS REQ'D
96	1/8" x 1/4" CLIP ANGLE #18	4	AS REQ'D
97	3/8" x 2" L.G. WEDGE ANCHOR	4	AS REQ'D
98	1/4" x 5/8" L.G. HEX WASHER	4	AS REQ'D
99	1/8" x 1/4" CLIP ANGLE #18	4	AS REQ'D
100	PLAIN STEEL TUBE	1	AS REQ'D

**CORNELL**  
 1000 CRESTWOOD INDUSTRIAL PARK  
 BOONVILLE, PA 17004

UNLESS OTHERWISE SPECIFIED ALL DIMENSIONS ARE IN INCHES AND STANDARD TOLERANCES ARE:

.0005" - .0010"  
 .010" - .030" ±.005"  
 .030" - .120" ±.010"  
 .120" - .300" ±.015"  
 .300" - .600" ±.020"  
 .600" - 1.200" ±.030"  
 1.200" - 2.400" ±.040"  
 2.400" - 4.800" ±.060"  
 4.800" - 9.600" ±.080"  
 9.600" - 19.200" ±.120"  
 19.200" - 38.400" ±.160"  
 38.400" - 76.800" ±.240"  
 76.800" - 153.600" ±.320"  
 153.600" - 307.200" ±.480"  
 307.200" - 614.400" ±.640"  
 614.400" - 1228.800" ±.960"  
 1228.800" - 2457.600" ±.1280"

USE: Confirmed for preliminary information of CORNELL IRON WORKS is contained herein and is not to be used for duplication, made available, or distributed without prior consent. Cornelli Iron Works Inc. shall not be held liable for any damages and losses resulting therefrom.

ITEM: JAMB FASTENER, TUBE, & BRACKET LOCATION - BETWEEN JAMB & SLIP-IN LABELED PACKAGE UNIT

REV. DRAWN: W3030  
 D BPNW  
 GA0365

SCALE: 1/2" = 1'-0"

DATE: 11-13-11

SHEET: 13

OF: 1

TUBE SELECTION	
WALL THICKNESS	TUBE
4 1/2" MIN. TO 8"	3" x 2" x 1/8" THICK
8" TO 12" MAX.	3" x 2" x 1/8" THICK

TUBE HOLE SIZE		
WALL CONSTRUCTION	FASTENER TYPE	DRILL HOLE RECD. IN TUBE
WOOD	1/4" x 5/8" L.G. HEX WASHER	Ø932 (0.281")
SHEET METAL STUDS	HEAD SELF DRILLING SCREW	Ø912 (0.267")
MASONRY WALL	3/8" x 2" L.G. WEDGE ANCHOR	Ø912 (0.267")