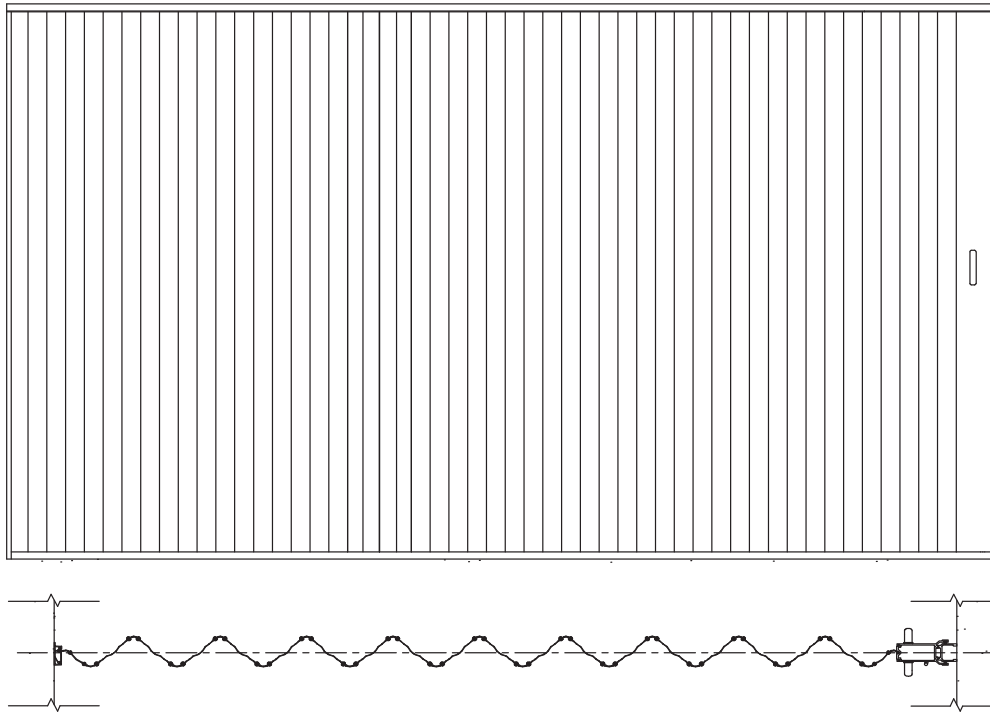


# TRANZFORM SPACE

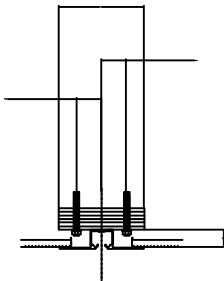
Model ESP10

## TRANZFORM SPACE



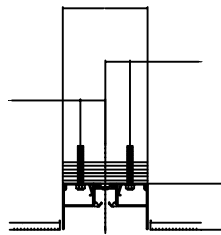
## TRANZFORM SPACE, HEAD DETAILS - STRAIGHT DOOR - MANUAL OPERATION

UNDER 14' IN HEIGHT



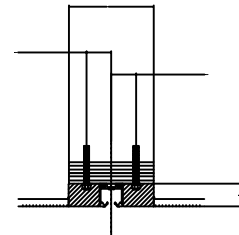
**STANDARD TRACK**  
(RT-RECESSED)

UNDER 14' IN HEIGHT



**TRACK W/PVC SOFFIT**  
(ST-SURFACE)

UNDER 14' IN HEIGHT



**TRACK W/WOOD TRIM**  
(ST-SURFACE)

**SIDE FOLDING ACCORDION UNITS TRANZFORM SOUND AND SPACE**  
**Model ESP20 and Model ESP10**

According to ASTM E90 the  
 Sound Transmission Class  
 (STC) rating is: 30

**GUIDE CONSTRUCTION OPTIONS**

**DOOR PROFILE WIDTH**

**Manual Doors**

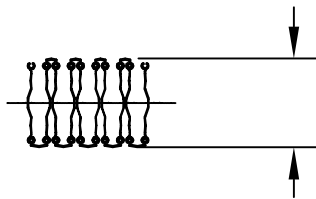
**Below 12' high:**

- ▶ Stacked width: 11.56"
- ▶ Extended width: 10.25" to 10.875"

**Motorized and Manual Doors**

**Above 12' high or 250 sq ft:**

- ▶ Stacked width: 13.56"
- ▶ Extended width: 12.25" to 12.875"



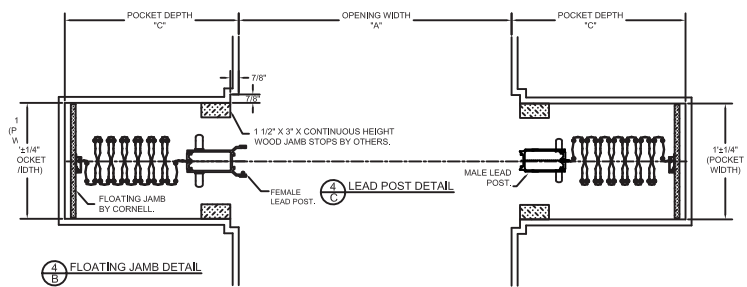
**SINGLE SLIDE WITH POCKET - EXAMPLE**

**Total width 10'**

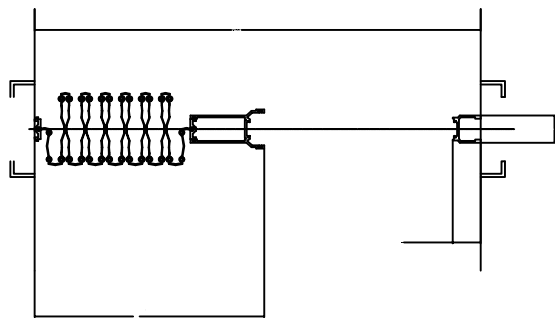
**Opening width 7'1"**

**Pocket depth 1'5½"**

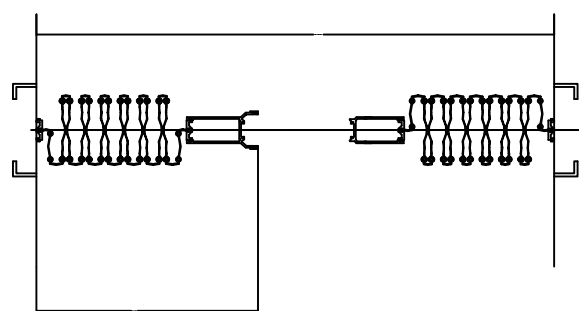
\*Shown without pocket door. Adding pocket door will increase pocket depth.



**PLAN VIEW: SINGLE SLIDE, FIXED JAMB**



**PLAN VIEW: BI-PARTING, FIXED JAMB**



The dimensions featured on this sheet are provided as a guide. Please contact the factory for exact dimensions for your closure.

**CUSTOM-DESIGNED SOLUTIONS**

Our experienced Architectural Design Support Team can customize our products to fit your specific application.  
 Call 800.233.8366 ext. 4551 • architecturaldesignsupport@cornellcookson.com

800.294.4358 | [cooksondoor.com](http://cooksondoor.com)

CornellCookson, LLC. is an ISO 9001:2008 registered company  
 10.2018

