

COOKSON®

EXTREME SERIES™

POWERED BY **LiftMaster**



## EX3700N SERIES HIGH PERFORMANCE SECTIONAL DOOR SYSTEM

The Cookson® Extreme Series™ High Performance Sectional Door System boasts an average opening speed of 24" per second, allowing productivity to flourish while delivering the aesthetic you're looking for. Tandem nylon rollers improve roller life and reduce running noise for smooth, quiet operation while safety stays top of mind with enhanced features such as 3' of light curtain protection, a cable management system and standard cable tension monitors.

[cooksondoor.com](http://cooksondoor.com)





**R-VALUE**  
UP TO  
**18.4**

**R-VALUE**  
UP TO  
**16.2**

### 2" MODELS

**EX3728N/EX3729N**  
27 gauge int/ext

**EX3724N**  
24 gauge ext/27 gauge int

**EX3722N**  
20 gauge ext/27 gauge int

**EX3723N/EX3721N/EX3720N**  
27 gauge int/ext

### 1-3/4" MODELS

**EX3717N/EX3718N**  
27 gauge int/ext

### 1-3/8" MODELS

**EX3708N/EX3709N**  
27 gauge int/ext

**EX3715N**  
27 gauge int/ext

## HARDWARE FEATURES



Double end stiles  
to improve  
hinge longevity



Long stem tandem rollers  
provide longer roller life and  
quieter door operation



Cable snubbers to keep tension  
on the cable to prevent it from  
coming off of the drum



Pusher springs are used  
to prevent cable slack  
(required for standard lift track)



50,000 cycle springs standard<sup>+</sup>

Intellicore is a registered trademark of Clopay Corporation.

## INTELLICORE® POLYURETHANE INSULATED DOORS

### PANEL OPTIONS



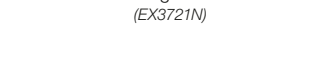
Minor Ribbed – Stucco Embossed  
(EX3709N, EX3715N, EX3717N, EX3720N,  
EX3724N, EX3729N)



Flush – Stucco Embossed  
(EX3708N, EX3718N, EX3722N, EX3728N)



Elegant Raised – Woodgrain Embossed  
(EX3723N)



Flush – Woodgrain Embossed  
(EX3721N)

### WINDOW OPTIONS



24" x 8" (EX3715N, EX3717N,  
EX3718N, EX3720N, EX3722N, EX3724N)



24" x 12" (EX3715N, EX3717N,  
EX3718N, EX3720N, EX3722N, EX3724N)



Aluminum Full-View (EX3717N, EX3718N,  
EX3720N, EX3722N, EX3724N)



26" x 13" – Double Pane Polycarbonate  
(EX3715N, EX3717N, EX3720N, EX3722N, EX3724N)



19-1/2" x 12" (EX3721N, EX3723N)



40-1/2" x 12" (EX3721N, EX3723N)



19-1/2" x 16"  
(EX3708N, EX3709N, EX3728N, EX3729N)



42" x 16"  
(EX3708N, EX3709N, EX3728N, EX3729N)



37" x 8" – Slim Windows  
(EX3728N, EX3729N)

### STANDARD SPECIFICATIONS

Max Width	16'2"
Max Height	14'0"
Max Door Weight	1,000 lbs
Upward Travel	24" per second
Downward Travel	15" per second
Door Thickness	2", 1-3/4", 1-3/8"
Insulation	CFC and HCFC-free Intellicore® polyurethane
R-Value*	Up to 18.4
U-Factor	0.16 (2" thick door) <sup>†</sup> 0.18 (1-3/4" thick door) <sup>†</sup> 0.19 (1-3/8" thick door) <sup>†</sup>
Air Infiltration	0.22 cfm/ft <sup>2</sup> (2" thick door) 0.25 cfm/ft <sup>2</sup> (1-3/4" thick door) 0.12 cfm/ft <sup>2</sup> (1-3/8" thick door)
Thermal Break	Continuous foam
Stiles	Double end stiles (standard)
Glazing Available	Tempered, insulated tempered, acrylic and polygal
Springs	50,000 cycle standard <sup>†</sup> (Max cycles available on a single shaft line)
Track Size	2" angle mount track standard 3" track where applicable
Track Type	Standard lift, high lift and full vertical lift

\*Calculated door section R-value is in accordance with DASMA TDS-163.

<sup>†</sup>U-Factor based on solid door.

<sup>†</sup>Cycles can vary depending on door configuration.

# COOKSON® EXTREME SERIES™ OPERATOR POWERED BY LIFTMASTER®

The Extreme Series™ High Performance Sectional Door System features a direct drive operator with an opening speed of 24" per second and up to 600 cycles per day. The display's easy-to-read user interface provides ease of limit-setting at floor level and can connect to the operator via Wi-Fi to myQ® Facility.

## SAFETY FEATURES



UL325 approved light curtain that reverses the door's downward motion when the beam is broken



Cable tension monitor that mitigates door operation when cable slackening occurs



Optional wireless bottom safety edge that reverses the door's downward motion upon contact with an object



## PERFORMANCE REQUIREMENTS

Average Opening Speed	24" per second
Average Closing Speed	15" per second
Max. Door Weight	1,000 lbs.
Warranted Cycles	600 cycles per day over 2-year warranty period
Drive System	Direct drive

## INSTALLATION AND COMMISSIONING

Motor Design	1.25 HP configuration serving single phase 115V/230V and 3-phase 230V configurations; 3-phase 460/575V available with accessory transformer
Wall Controller	Separation of low and high voltage wiring – includes functionality of 3-button station, PLUS setting door profile, programming limits, diagnostics
Programming	Complete the following programming at floor level: set limits; choose door profiles for speed; set operating modes; select photo entrapment devices
Display	Provides textual status indications including: <ul style="list-style-type: none"> <li>Absolute cycle count</li> <li>Service cycle count</li> <li>Diagnostics messages</li> <li>Door/operator status</li> </ul>
Cycle Counter	Re-settable cycle counter via the wall controller and/or through myQ® Facility
Limit Setting	Simple electronic push-button setup via the wall controller

## CONNECTIVITY

Wi-Fi Connectivity	Connectable solution via built-in Wi-Fi
myQ® Facility Subscription	First year myQ® Facility subscription included
Over-the-Air Updates	Standard via Wi-Fi
Service Cycle Count	On wall controller display; standard via myQ® Facility
Lifetime Cycle Count	On wall controller display; standard via myQ® Facility
Remote Diagnostics	On wall controller display; standard via myQ® Facility

# COLOR OPTIONS



*\*Additional charges apply. Due to the printing process, colors may vary.*

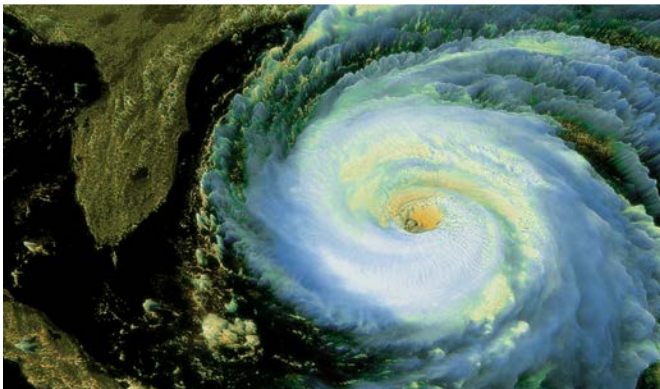
## CUSTOM PAINT OPTION



Color Blast® finish offers more than 1,500 Sherwin-Williams® color options to complement your building design. This durable two-part paint system has been thoroughly tested and is backed by a five-year warranty.

*Due to solar reflective formulation to meet greater than a 38 LRV, some colors may not be available.*

AVAILABILITY	Standard White	Glacier White	Almond	Desert Tan	Sandtone	Commercial Tan	Bronze	Chocolate	Mocha Brown	Hunter Green	Gray	Charcoal	Black	Trinar® White	Trinar® Beige	Lustra™ Black	Lustra™ Charcoal	Lustra™ Silver
EX3708N, EX3709N	■	■	■	■	■		■	■	■		■	■	■	■				
EX3728N, EX3729N	■	■	■	■	■		■	■	■		■	■	■	■		■	■	■
EX3715N	■	■				■		■	■		■	■						
EX3717N, EX3718N	■	■				■		■	■		■	■		■	■			
EX3720N	■	■				■		■	■		■	■		■	■			
EX3722N	■							■										
EX3723N, EX3721N	■		■	■	■			■				■						
EX3724N	■					■		■			■		■	■				



## WINDCODE®

Design pressures (DP) up to 36 psf depending on door size, configuration and exposure. Models tested 50% greater than DP.



Building code officials, builders, insurance companies and building owners are increasingly aware of the need for structures to withstand high winds resulting from hurricanes, tropical storms and other weather related events. With the introduction and adoption of the International Building Code in most areas of the U.S., wind load is no longer an issue exclusive to Florida and other hurricane prone areas.

Clopay Corporation has developed a unique WindCode® door ID program to help you select the right garage door. It includes factors like local building code, MPH requirements, exposure level and mean roof height.



For more information on these and other Cookson products, visit [cooksondoor.com](http://cooksondoor.com). Architects and specifiers, visit [architectdoorhelp.com](http://architectdoorhelp.com).



©2022 CornellCookson, LLC. All rights reserved. Color Blast, Lustra, and WindCode are registered trademarks of Clopay Corporation.

CKSN-EX3700NSS-22