

ALARMGARD® TUBE MOTOR OPERATOR

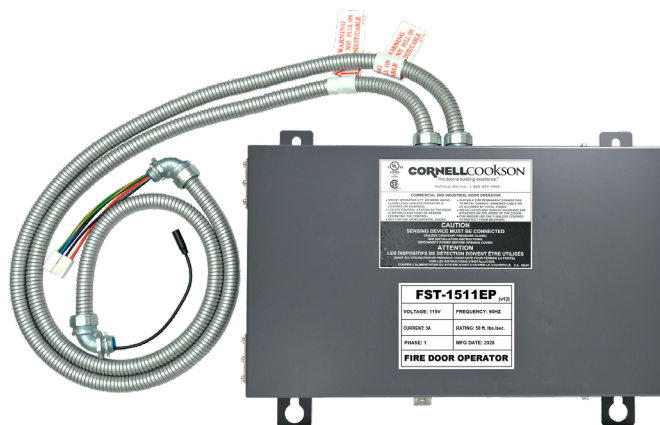
ROLLING FIRE DOORS & COUNTER FIRE SHUTTERS

WHERE SPACE IS PREMIUM, PROTECTION IS PARAMOUNT

AlarmGard® Tube Motor Operators are concealed in the shaft assembly, making them ideal for openings with tight clearances or when you need to conceal the operator drive components without adding a bulky and unsightly motor cover. The AlarmGard Tube motor operator can be used on Fire Doors or Counter Fire Shutters.

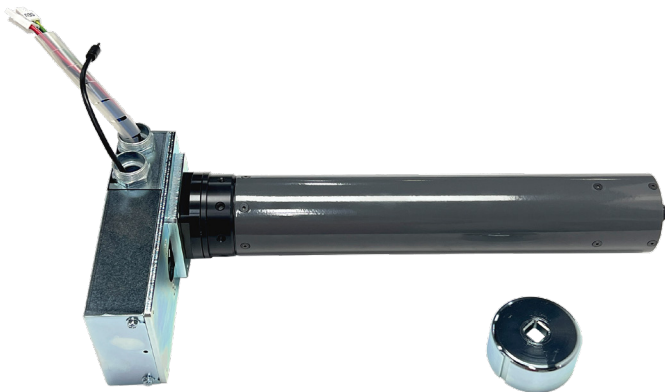
Features and Benefits

- ▶ Convenience of motor operation in a low profile, concealed design.
- ▶ Auto-Reset and selectable Auto-Open.
- ▶ Available with or without battery back up.
- ▶ UL 325 compliant and UL 864 Listed motor assembly.
- ▶ Rated for up to 10 cycles per day.
- ▶ Electrical Connections from the operator to wall mounted control panel is plug and play.
- ▶ Internal fail-safe release device and internal centrifugal governor.
- ▶ Electronic type limit switch, ease of setting limits through 3-button station at floor level.



Product Application Requirements

- ▶ An AlarmGard tube motor can operate a fire door or a fire counter shutter up to approximately 120 ft².*



Technical Specifications

Input Voltage	115 VAC/60 Hz
.....	230 VAC/60 Hz**
.....	230 VAC/50 Hz**
Activation Input	24 V
Phase	1
Duty.....	up to 10 cycles/day
Auxiliary Manual Operation	No

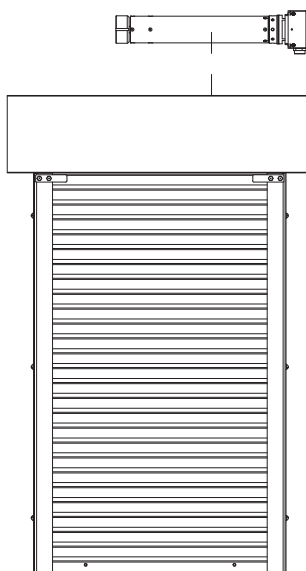
*Size limit varies by door configuration and gauge required.

**Special order - additional lead time applies.

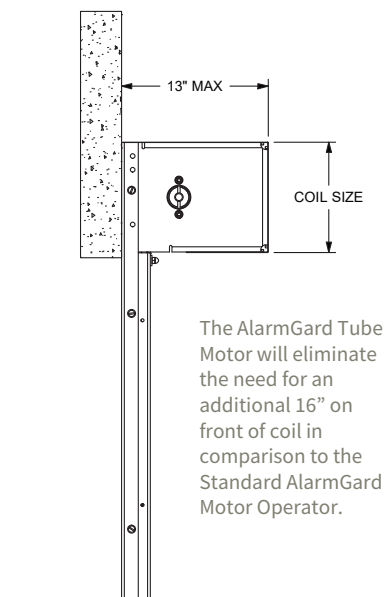
MOTOR OPERATOR **ALARMGARD TUBE MOTOR** Rolling Fire Doors & Counter Fire Shutters

Technical Drawings

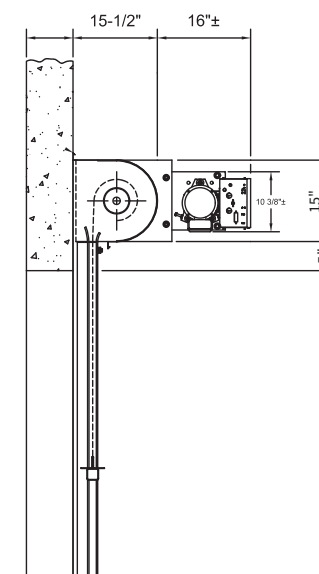
AlarmGard® Tube Motor
Front View



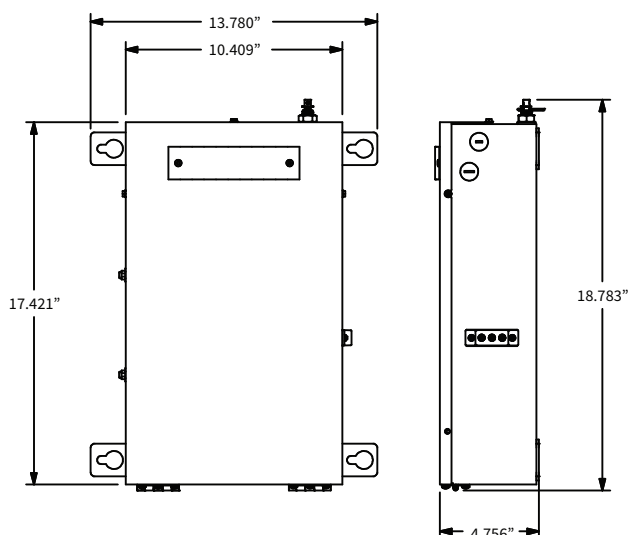
AlarmGard® Tube Motor
Side View



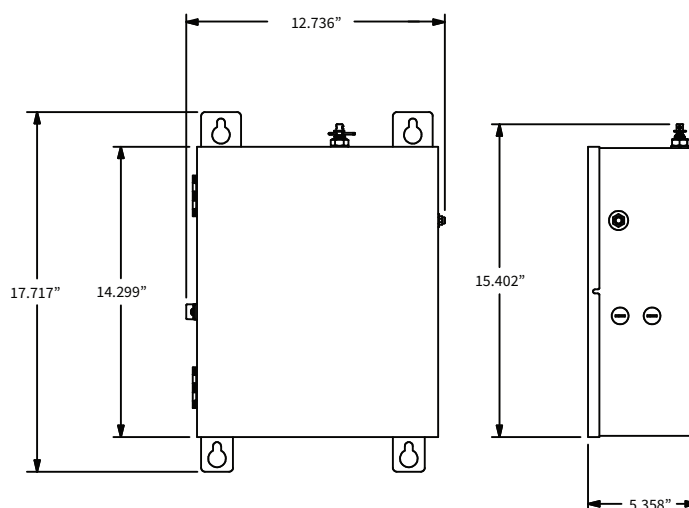
Standard AlarmGard® Motor Operator
Side View



Motor Control Panel



Battery Back Up Motor Control Panel



CUSTOM-DESIGNED SOLUTIONS

Our experienced Architect Design Support Team can customize our products to fit your specific application.
Call 800.233.8366 ext. 4551 • architecturaldesignsupport@cornellcookson.com

800.233.8366 | cornelliron.com

CornellCookson, Inc. is an ISO 9001:2015 registered company

7.2025

CORNELL
Innovative door solutions®