

TRANZFORM SPACE

Model ESP10



COMPACT, SECURE AND PRIVATE SPACE SEPARATION

PRIVACY PROTECTION

TranZform Space doors deliver separation of space in areas where interrupting a visual pathway is paramount.

BUILT FOR THE LONG HAUL

Although built for lasting performance and warranted against defects in materials and workmanship for two years, this unit is designed for ease of service. With the unit in place, one or more panels can be easily changed out simply by removing and replacing the flexible vinyl hinges.

DEPLOYS QUICKLY AND EASILY

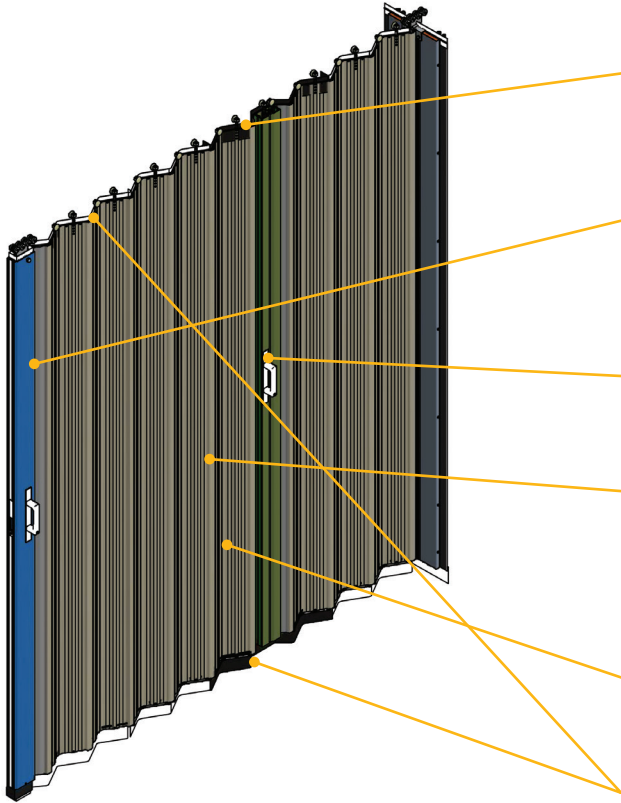
When a large singular area needs to serve multiple uses, depend on TranZform Space. Supplied standard in three sophisticated finishes and available in a host of other options, this unit adds warmth and flexibility to any room.

SUITABLE APPLICATIONS

Install TranZform Space in religious facilities, educational institutions, government buildings, healthcare offices, hotels, public offices, airports, museums, theaters, private offices and more.

SIDE FOLDING ACCORDION UNITS **TRANZFORM SPACE Model ESP10**

STANDARD COMPONENT MATERIALS AND FINISHES



TRACK - Heavy-duty extruded aluminum or steel supports and retains the roller assemblies.

ROLLERS - Every other panel is fitted with a nylon wheel, ball bearing roller for added wall panel support and smooth operation. Lead posts are fitted with heavy-duty trolleys featuring multiple sets of dual rollers.

LEAD POST - Heavy-duty extruded aluminum with powder coated finish to complement wall panels. Grip-type handles provide operational support and hook bolt connection to strike posts. Keyed locking is optional.

STRIKE POST - Heavy duty extruded aluminum with hook bolt strike to seal tight with the lead post. Powder coated finish complements wall panels.

PANELS - Continuous roll-formed corrugated steel for impact resistance. Features permanently-bonded, scratch-resistant, decorative vinyl in one of three stock finishes: Almond Embossed Weave, Driftwood Embossed Weave and Vanilla Cream Embossed Leather. The other side is painted in Platinum Gray.

HINGES - Full height extruded vinyl hinges are rugged for lasting performance and allow for simple panel replacement with units mounted in place. Color matched to complement wall panels.

HEADER/FLOOR SWEEPS - Flexible extruded vinyl seals are attached to the top and bottom of the panels to eliminate gaps at the floor and head.

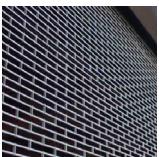
END MEMBER POST - Used to attach the stack side(s) of the unit to the wall jamb to provide a full height, secured and sealed fit.

OPERATION

Choose from manual operation required.

OPTIONAL MATERIALS AND FINISHES

Other panel finishes are available with extended lead times at no added cost. Custom finishes are available with extended lead time and additional cost.



CUSTOM-DESIGNED SOLUTIONS

Contact our experienced Architectural Design Support Team for help in customizing our products to fit your specific application.

 www.architectdoorhelp.com

800.294.4358 | cooksondoor.com

CornellCookson, LLC. is an ISO 9001:2015 registered company
8.2016

COOKSON Preferred door solutions.®