

INSULATED ROLLING DOOR

# THERMISER® DOOR

Models ESD20 & ESD20W (operational wind-load)



## MAINTAIN TEMPERATURES AND BOOST ENERGY EFFICIENCY

### ENERGY-EFFICIENT CLIMATE CONTROL

Thermiser Insulated Rolling Doors are designed for exterior use and help maintain different temperatures on each side of the door. They are an ideal choice for use in environments that require climate control, security, and durability: distribution, industrial, hospitality, retail and other applications.

### PERFORMANCE

Thermiser doors boast more than just efficiency. It goes the distance with rugged galvanized steel coated in our GalvaNex™ polyester enamel finish to resist rust and corrosion. High-quality materials ensure little to no maintenance and deliver a low life cycle cost, including a warranty for 50,000 cycles as standard. The door features a rolling design, storing compactly out of the way when open.

### WIND-LOAD

Thermiser can be configured to meet a maximum operational wind load of 20 PSF. This option guards your facility against extreme weather and keeps your door operable in high-wind events. Added roller wind locks help the curtain smoothly roll through the guides and a springless design eliminates resistance, keeping your door in line no matter which way the wind blows.

### SEAL THE BUILDING ENVELOPE

Foamed in place insulation offers superior protection against the elements, improved security and reduced sound transmission. The Thermiser Door helps seal the building envelope and keeps noise in or out.

800.294.4358 | [cooksondoor.com](https://www.cooksondoor.com)

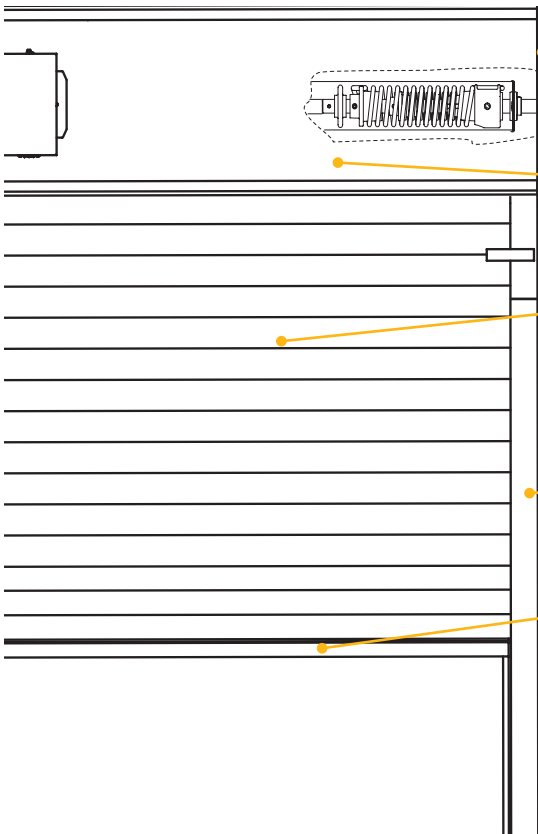
CornellCookson, LLC. is an ISO 9001:2015 registered company

1.2024

Preferred door solutions®  
**COOKSON**

# INSULATED ROLLING DOOR **THERMISER® DOOR** Models ESD20 & ESD20W (operational wind-load)

## STANDARD COMPONENT MATERIALS AND FINISHES



**BRACKETS** - Steel with powder coated finish to match curtain. Bolt to guide assembly and support counter-balance shaft and curtain.

**COUNTER-BALANCE SHAFT** - Steel. Supports curtain and contains torsion springs for assisting operation.

**HOOD** - Galvanized steel with GalvaNex™ polyester enamel finish to match curtain. Encloses the curtain and provides weather resistance at the head of the door.

**CURTAIN** - Galvanized steel with GalvaNex™ polyester enamel finish in Gray, Tan, White or Brown. Flame Spread Index of 0 and a Smoke Developed Index of 10 as tested per ASTM E84. The slat has an R-value of 8.0 as calculated using the ASHRAE Handbook of Fundamentals.

**GUIDES** - Structural steel with powder coating to match curtain. Angle assemblies bolt to the wall and support the weight of the door.

**BOTTOM BAR** - If width is less than 24'5", extruded aluminum supplied in mill finish. If width is greater than 24'5", steel supplied with powder coating to match curtain.

## OPERATION AND STRUCTURAL REQUIREMENTS

**Hand chain, hand crank and a variety of motor options are available.**

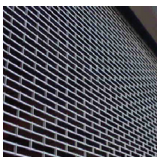
This product is supported by a guide assembly attached to the jamb construction. No additional header support is required unless hood supports are mandated by a larger opening width.

## OPTIONAL MATERIALS AND FINISHES

- ▶ Aluminum in mill, clear and color anodized
- ▶ Stainless steel - 300 series in #4 finish
- ▶ Spectrashield® Powder coating in more than 180 colors
- ▶ For a more durable finish, consider upgrading to our GalvaNex™ Ultra™ or SpectraShield® Ultra™ powder coat finish.
  - It is a polyester based textured wear resistant clear coat that provides increased resistance to corrosion of the curtain and improved durability against normal abrasion and scratching due to cycling.

### Brackets, Guides and Bottom Bar

- ▶ Hot-dip galvanizing on steel components
- ▶ Zinc-enriched, corrosion-resistant powder coating in Gray



## CUSTOM-DESIGNED SOLUTIONS

Contact our experienced Architectural Design Support Team for help in customizing our products to fit your specific application.

 [www.architectdoorhelp.com](http://www.architectdoorhelp.com)