

ROLLING GRILLES

# VISIONAIRE® & VISTAGARD™ GRILLES

Models ESG10, ESG12, & ESG11



## SECURITY, VISIBILITY AND AIR FLOW IN ELEGANT DESIGNS

### CUSTOM-BUILT, SECURE SEPARATION

Durable Rolling Security Grilles keep areas off-limits and can be configured to meet your desired design aesthetic. Built to an exact opening size, the commercial-duty design is durable, requires little-to-no maintenance and offers ease of repair with readily available parts. Install these grilles behind storefront glass, at service window openings, in schools, malls, healthcare settings and more.

### OUT-OF-SIGHT, COMPACT STORAGE

For convenience, the curtain stores in an overhead coil supported by the guide extensions.



Open Air Straight Pattern  
**VISIONAIRE® MODEL ESG10**  
Available in 3", 6", or 9" spacing



Open Air Brick Pattern  
**VISIONAIRE® MODEL ESG12**  
For superior, high-cycle durability



Solid, Clear Protection  
**VISTAGARD™ MODEL ESG11**  
Flame-retardant polycarbonate material provides protection from refuse and the theft of small articles through the curtain. Glazed with Lexan®, curtain modules are secured by molded nylon links.

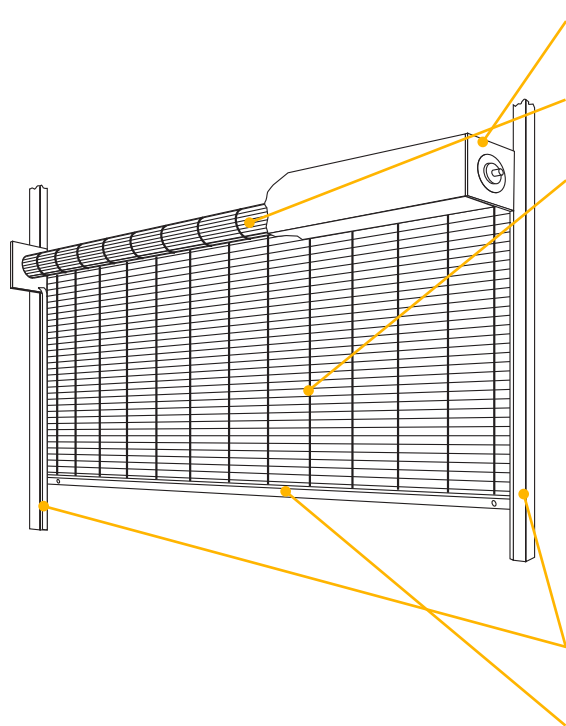
800.294.4358 | [cooksondoor.com](http://cooksondoor.com)

CornellCookson, LLC. is an ISO 9001:2015 registered company  
7.2025

**COOKSON** Preferred door solutions.®

## ROLLING GRILLES **VISIONAIRE® AND VISTAGARD™ GRILLES Models ESG10, ESG12, & ESG11**

### STANDARD COMPONENT MATERIALS AND FINISHES



**BRACKETS** - Steel with SpectraShield® powder coating in Gray. Bolt to guide assembly and support counter-balance shaft and curtain.

**COUNTER-BALANCE SHAFT** - Steel. Supports curtain and contains torsion springs for assisting operation.

#### **CURTAIN**

##### **VISIONAIRE MODEL ESG10**

5/16" Solid aluminum rods (alloy 5056 H32) at 2" on center with vertical chains of eyeleted aluminum spaced at 9" apart. Chains may also be specified at 6" or 3" apart.

##### **VISIONAIRE MODEL ESG12**

5/16" Solid aluminum rods (alloy 5056 H32) at 2" on center. Heavy-duty aluminum links are staggered by tube spacers.

##### **VISTAGARD MODEL ESG11**

5/16" Solid aluminum rods (alloy 5056 H32) at 3" on center with vertical chains of eyeleted aluminum spaced at 12" apart. Flame-retardant polycarbonate panels offer solid, clear protection.

**GUIDES** - Extruded aluminum in mill finish, polypropylene pile runners and mounting member. Bolt to the wall and support the weight of the grille.

**BOTTOM BAR** - Heavy-duty extruded aluminum in mill finish. For widths greater than 27'-4", bar is reinforced with aluminum angle(s).

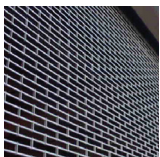
### OPERATION AND STRUCTURAL REQUIREMENTS

**Hand-crank, push-up and a variety of motor options are available.**

This product is supported by a guide assembly attached to the jamb construction or structural tubes attached to either wall or overhead construction. No additional header support is required unless hood supports are mandated by a larger opening width.

### OPTIONAL MATERIALS AND FINISHES

- ▶ Aluminum in Clear, Dark Bronze Anodized Finish and Black Anodized Finish
- ▶ Stainless steel 300 series in #4 finish (ESG10 and ESG11 only)
- ▶ SpectraShield® powder coating in more than 180 colors (not available on curtains)
- ▶ Hot-dip galvanizing on steel rods (ESG10 only)
- ▶ Hoods available as an option. Galvanized steel with exclusive GalvaNex™ polyester enamel finish in Gray or SpectraShield® Powder Coating in more than 180 colors; Aluminum in Mill, Clear and Color Anodized finish; or 300 series stainless steel with a #4 finish



### CUSTOM-DESIGNED SOLUTIONS

Contact our experienced Architect Design Support Team for help in customizing our products to fit your specific application.

 [www.architectdoorhelp.com](http://www.architectdoorhelp.com)