

INSULATED ROLLING DOOR

THERMISER MAX[®] - LOW U DOOR

Model ESD40



YOUR CLEAR CHOICE FOR ENERGY EFFICIENCY

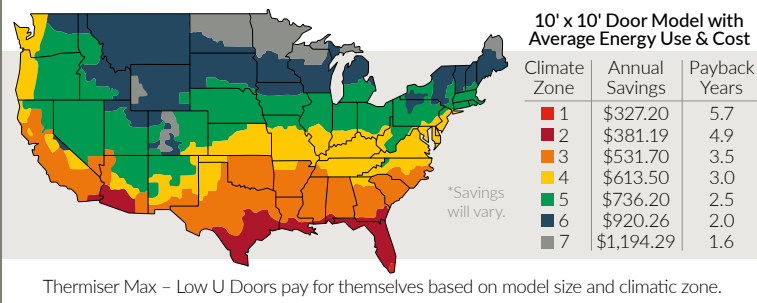
U-FACTOR CERTIFIED THERMAL PERFORMANCE.

Energy savings and a more comfortable indoor environment are just a few of the benefits of Thermiser Max[®] - Low U Door. Its design features a CPVC backer, offering a U-factor rating of 0.532 for the full assembly.* By undergoing third-party U-factor testing, Thermiser Max - Low U Door carries the industry's most accurate measurement of thermal performance.

DESIGNED FOR RUGGED APPLICATIONS.

The Thermiser Max - Low U Door operates quietly and is ideal for exterior applications where climate control is critical, including warehouses and heavy equipment storage facilities. An insulated curtain, patented perimeter seal and thermally-broken guide construction work to minimize the speed of heat transferred through the door assembly.

THERMISER MAX - LOW U DOOR SAVINGS COMPARED TO A STANDARD INSULATED DOOR



MORE THAN MEETS THE EYE.

Along with its standout thermal performance, the Thermiser Max - Low U insulated door has another perk. The door carries a Sound Transmission Rating (STC) of up to 27 for the full assembly, offering control over exterior and interior noise levels. Doors meet ASHRAE[®] 90.12, IECC[®] 2021 and California's Title 24 air infiltration requirements with an independently tested value of less than 0.3 CFM/ft².

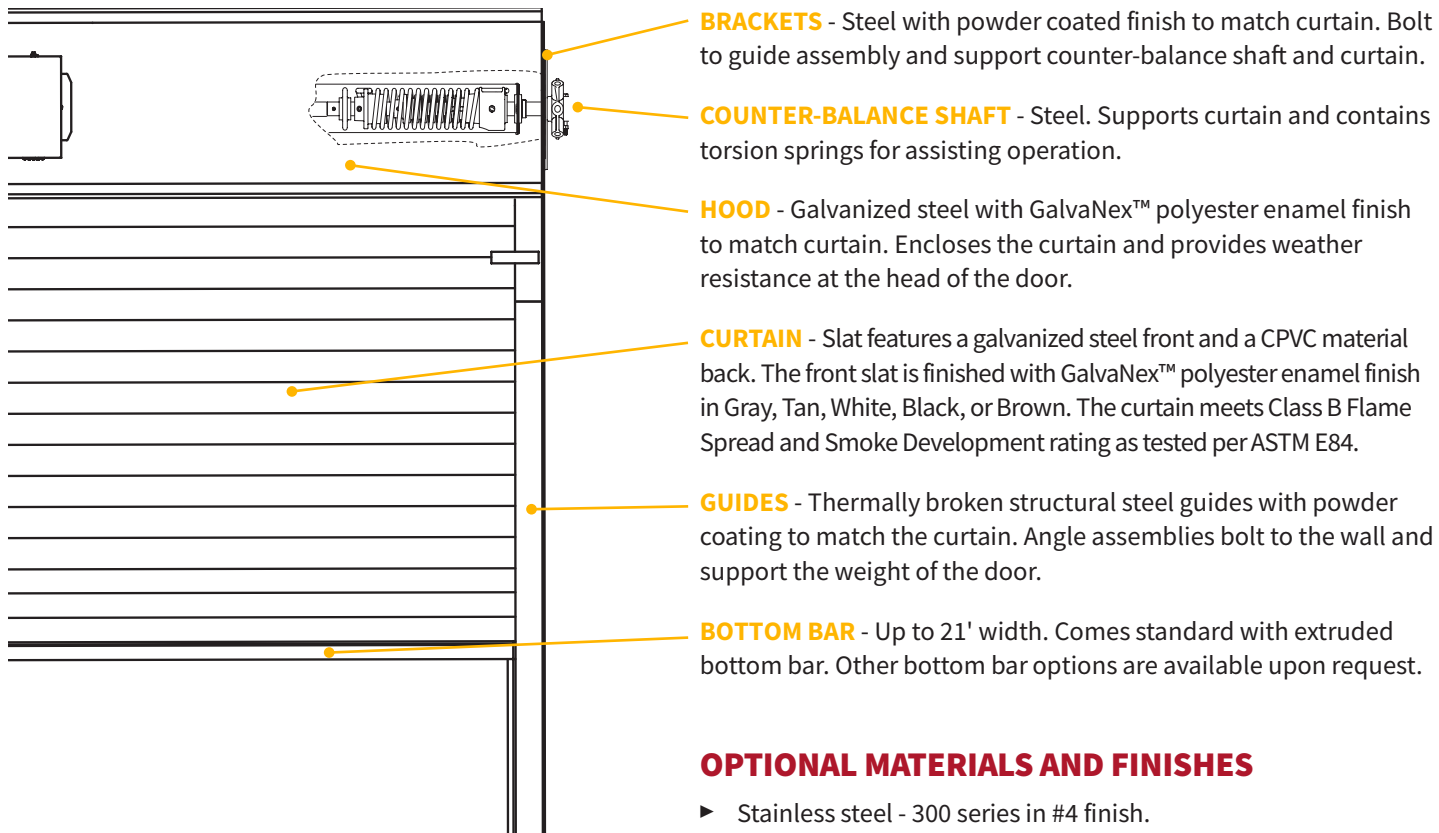
**Options such as windows, pass doors, etc. may impact U-factor. Contact factory for details on specific configurations.*

800.294.4358 | cooksondoor.com

CornellCookson, LLC. is an ISO 9001:2015 registered company
4.2026

Preferred door solutions.[®]
COOKSON

STANDARD COMPONENT MATERIALS AND FINISHES



BRACKETS - Steel with powder coated finish to match curtain. Bolt to guide assembly and support counter-balance shaft and curtain.

COUNTER-BALANCE SHAFT - Steel. Supports curtain and contains torsion springs for assisting operation.

HOOD - Galvanized steel with GalvaNex™ polyester enamel finish to match curtain. Encloses the curtain and provides weather resistance at the head of the door.

CURTAIN - Slat features a galvanized steel front and a CPVC material back. The front slat is finished with GalvaNex™ polyester enamel finish in Gray, Tan, White, Black, or Brown. The curtain meets Class B Flame Spread and Smoke Development rating as tested per ASTM E84.

GUIDES - Thermally broken structural steel guides with powder coating to match the curtain. Angle assemblies bolt to the wall and support the weight of the door.

BOTTOM BAR - Up to 21' width. Comes standard with extruded bottom bar. Other bottom bar options are available upon request.

OPTIONAL MATERIALS AND FINISHES

- ▶ Stainless steel - 300 series in #4 finish.
- ▶ 316 stainless steel in #4 finish.
- ▶ SpectraShield® Powder Coating in more than 180 colors.
- ▶ For a more durable finish, consider upgrading to our GalvaNex Ultra™ or SpectraShield Ultra™ powder coat finish.
 - It is a polyester based textured wear resistant clear coat that provides increased resistance to corrosion of the curtain and improved durability against normal abrasion and scratching due to cycling.

Brackets, Guides and Bottom Bar

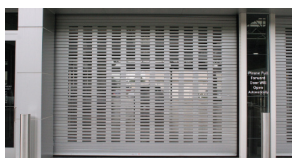
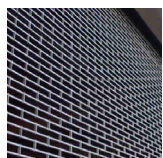
- ▶ Hot-dip galvanizing on steel components.
- ▶ Zinc-enriched, corrosion-resistant powder coating in Gray.

OPERATION AND STRUCTURAL REQUIREMENTS

Hand chain, hand crank and a variety of motor options are available.

This product is supported by a guide assembly attached to the jamb construction. No additional header support is required unless hood supports are mandated by a larger opening width. This door can be configured to offer a static wind load of up to 20 psf.

Interior mount only.



CUSTOM-DESIGNED SOLUTIONS

Contact our experienced Architect Design Support Team for help in customizing our products to fit your specific application.

 www.architectdoorhelp.com