

# ROLLING COUNTER DOOR PACKAGE UNIT

Model ESC20 with frame and integrated sill



The unit in the photo is shown with optional black powdercoat.

## A SEAMLESS SOLUTION FOR INSTALLATION IN A SNAP

### FLAWLESS APPEARANCE

Our Rolling Counter Door Package Unit features minimal transitions and seams with no exposed edges, creating a true marvel of smooth rolling steel. The bottom bar construction has also been reimagined and no longer hangs below the fascia when in the fully open position. This allows customers to get an unobstructed, clear view.

### VERSATILITY IN ACTION

Rolling Counter Doors are often used in cafeterias, stadiums, hospitality and educational facilities, healthcare offices, or any interior or exterior application that requires ease of installation where a fully trimmed opening is desired. It features an easy installation process and an aesthetically pleasing appearance.

### EASY INSTALLATION

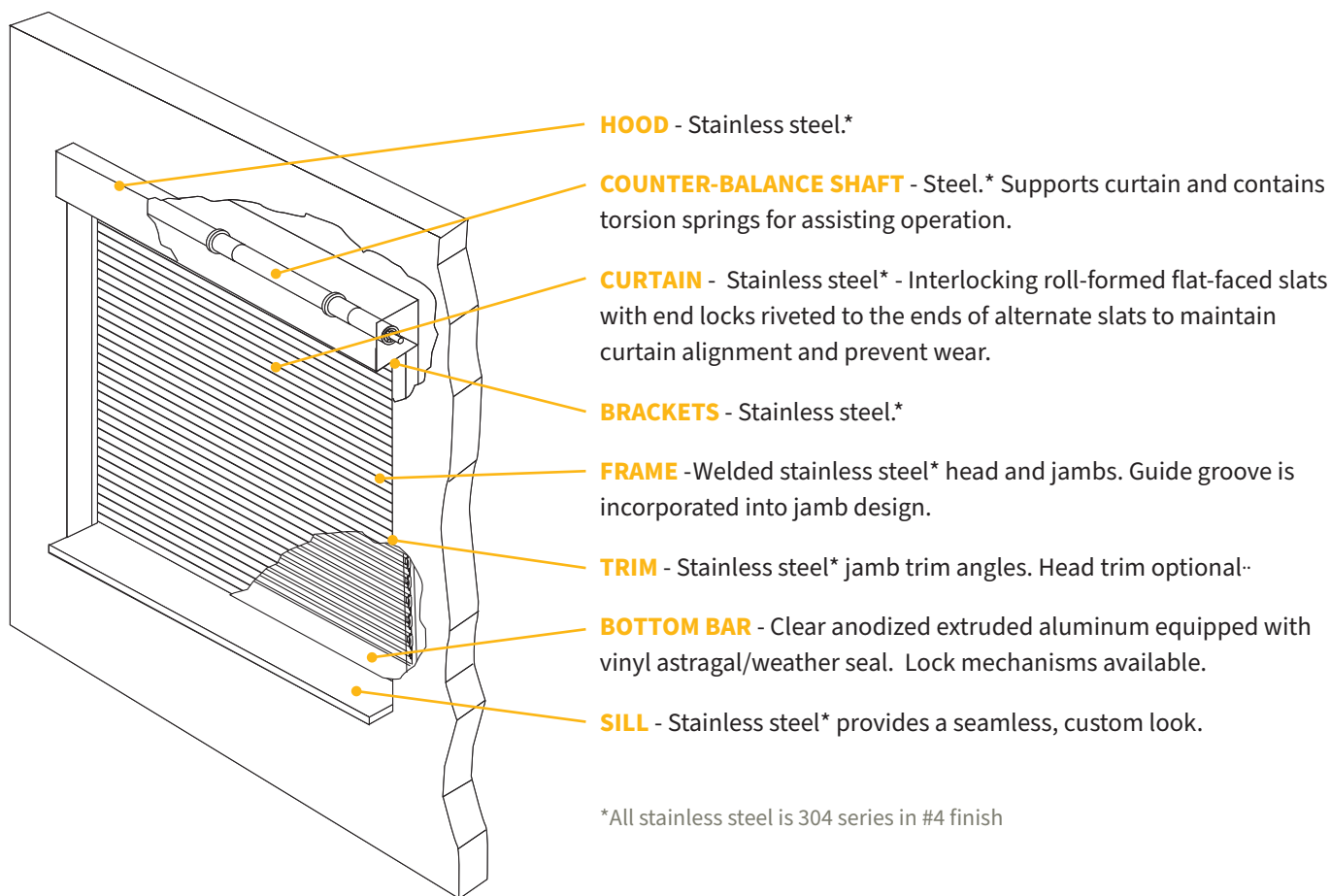
Expertly manufactured as one pre-built piece, the Counter Door Package Unit makes installation as simple as sliding it into your predetermined wall opening and fastening. Units may be used in masonry or drywall openings from 4 <sup>3</sup>/<sub>4</sub>" to 13" thick.

### PACKAGED-AND FABRICATED-WITH CARE

Our Rolling Counter Door Package Unit with fully welded frame and integrated sill is a complete, ready-to-install package fabricated with you in mind. From its functional components to its style, every piece was carefully considered. It is available in 304 series stainless steel in #4 finish and powder coat in over 180 colors. Operation options are offered in hand crank, push up, and tube motors to continue the simplicity of installation and minimalist look and feel.

## ROLLING COUNTER DOOR **ROLLING COUNTER DOOR PACKAGE UNIT** with frame and integrated sill

### STANDARD COMPONENT MATERIALS AND FINISHES

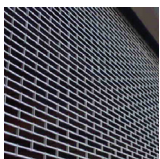


### OPTIONAL MATERIALS AND FINISHES

- ▶ Galvanex curtain in gray or tan
- ▶ Stainless Steel Screengard curtain
- ▶ SpectraShield® Powder Coating in more than 180 colors

### OPERATION AND STRUCTURAL REQUIREMENTS

**Hand-crank, push-up and motor options are available.**



### CUSTOM-DESIGNED SOLUTIONS

Contact our experienced Architectural Design Support Team for help in customizing our products to fit your specific application.

 [www.architectdoorhelp.com](http://www.architectdoorhelp.com)

800.294.4358 | [cooksondoor.com](http://cooksondoor.com)

CornellCookson, LLC. is an ISO 9001:2015 registered company

10.2021

**COOKSON** Preferred door solutions.®