

HIGH PERFORMANCE LINE

EXTREME[®] 300 SERIES DOOR

Models EPD 300 (service door curtain) & EPI 300 (insulated curtain)

Compatible with



SmartSync[™]
Diagnostic Tool



INTELLIGENT OPERATION AND HIGH CYCLE LIFE

CYCLES YOU NEED TO RUN YOUR BUSINESS

The easy-to-install 300 Series Door offers 300,000 cycles of maintenance-free performance – maximizing uptime and improving productivity wherever it's installed. Since springs are the most frequent point of failure for high-cycle products, this door features a rugged springless design. It is ideal for applications that do not need a million cycle door, but do require continuous uptime. Need more than 300,000 cycles, but less than a million? This door can be upgraded to offer 500,000 cycles with a 3 year warranty.

APEX[™] SMARTCONTROLLER

An intelligent control panel featuring plug and play wiring makes installing and servicing the 300 Series Door easier than ever before. The LCD screen communicates door status messages, provides easy-to-follow instructions for door commissioning, and electronically sets door limits.

UNPARALLELED ENERGY EFFICIENCY

Yes, faster doors mean reduced air exchange, but the 300 Series Door goes further to improve energy efficiency. The insulated model features the patented Thermiser Max[®] perimeter sealing system – which meets ASHRAE[®] 90.12, 2015 IECC[®] and California's Title 24 air infiltration requirements with an independently tested value of less than 0.3 CFM/FT².

SMOOTH HIGH-SPEED OPERATION

The compact operator features a variable-frequency drive that ensures a soft start and stop – reducing wear and tear on both the door and the operator. The 300 Series Door operates at speeds of up to 24 inches per second. In addition, the operator's direct drive design means there's no sprocket and chain to wear or replace. With flexibility in mind, the 300 series grille is compatible with a 120V service (requires transformer, provided with upgrade).

800.294.4358 | cooksondoor.com

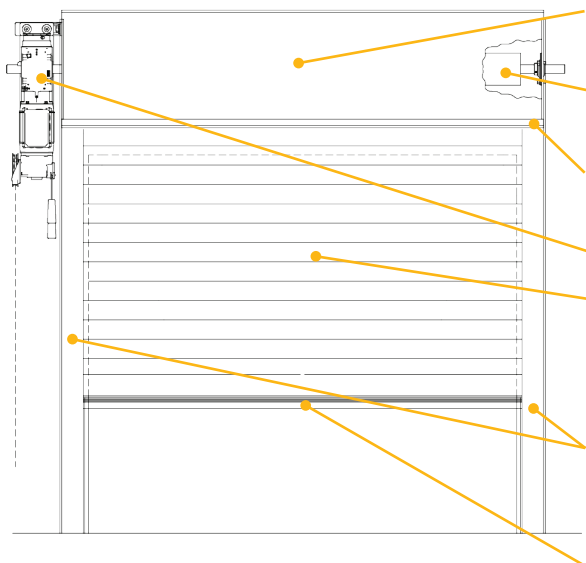
CornellCookson, LLC. is an ISO 9001:2015 registered company
9.2023

EXTREME SERIES

Preferred door solutions.[®]
COOKSON

HIGH PERFORMANCE LINE **EXTREME® 300 SERIES DOOR** Models EPD 300 & EPI 300 (insulated)

STANDARD COMPONENT MATERIALS AND FINISHES



HOOD - Galvanized steel with powder coat finish to match curtain. Encloses the curtain and provides weather resistance at the head of the door.

SPRINGLESS SHAFT - Steel. Design reduces maintenance requirements and facilitates cycle capacity.

BRACKETS/COIL BOX ASSEMBLY - Steel plate brackets with powder coat finish to match guides.

MOTOR - Compact, direct drive operator with no roller chains or sprockets.

CURTAIN - Galvanized steel with rust inhibiting CycleShield™ powder coat standard finish in Gray, Tan or White. Interlocking roll-formed slats with end locks riveted to ends of alternate slats to maintain slat alignment and prevent wear. MODEL EPI300 - Features an insulated curtain.

GUIDES - Steel angles with powder coat finish to match curtain. Self-lubricating UHMW anti-wear strips greatly reduce friction and curtain wear. Perimeter-sealing, double brush weather strip.

BOTTOM BAR - Two back to back structural steel angles with powder coat finish to match curtain. Bottom bar flag included for blanking and commissioning accuracy.

OPERATION AND STRUCTURAL REQUIREMENTS

Motor operation required.

This product is supported by a guide assembly attached to the jamb construction. No additional header support is required unless hood supports are mandated by a larger opening width.

- ▶ **Static up to 50 PSF design wind-load**
- ▶ **Operational up to 10 PSF maximum wind-load**

OPTIONAL MATERIALS AND FINISHES

- ▶ Stainless Steel - 300 series in #4 finish
- ▶ CycleShield™ Powder Coating is available in more than 180 colors in addition to the standard Gray, Tan and White - *also available in CycleShield Ultra*

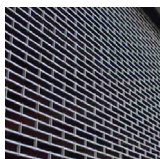
UNIQUE FEATURES

INTELLIGENT COMMUNICATION - The Apex™ SmartController (NEMA 4X) features plug and play connections to operator and standard sensors to reduce installation time. Its LCD screen provides step-by-step instructions for door commissioning, electronic limit setting, and status/error messaging.

MONITORED PROTECTION, EVEN AT HIGH SPEEDS - The factory-mounted UL 325-2010 (NEMA 4X) compliant photo eye sensors allow for momentary contact operation - useful in parking garages and other high-use openings. Interruption of the photo eye beam before the door fully closes causes the door to immediately halt downward travel and reverse direction to return to the fully open position.

SAFETYGARD LIGHT CURTAIN TECHNOLOGY - The 6' tall light curtain is installed within the guide and blends into the guide construction without a piece of slotted trim. If the grille is cycling and an object passes through the curtain beams, the door will immediately halt downward travel and reverse direction to return to the open position.

120V COMPATIBILITY - Compatible with 120V input by adding our transformer option. The transformer must be mounted to the wall and is 13 1/2" wide by 16 1/8" high.



CUSTOM-DESIGNED SOLUTIONS

Contact our experienced Architectural Design Support Team for help in customizing our products to fit your specific application.

 www.architectdoorhelp.com

800.294.4358 | cooksondoor.com

CornellCookson, LLC. is an ISO 9001:2015 registered company
9.2023

COOKSON Preferred door solutions.®