

COUNTER FIRE DOOR COMPARISON CHART

Models ERC10 & ERC11 (SmokeShield®)

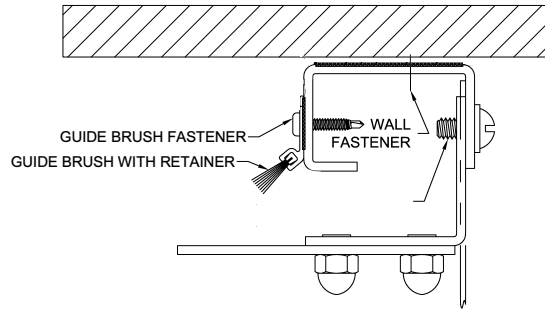
| Previous Counter Fire Door | VS | New Counter Fire Door* |
|-----------------------------|----------------------|---|
| 15 1/4" | Headroom Requirement | 8 1/2" |
| 20 3/4" | Backroom Requirement | 8" |
| Unfinished | Guide Fasteners | Powdercoated to Match Guides |
| Standard Graduated | Barrel Rings | Low-Profile |
| Standard Adds 1/2" Headroom | Astragal | Optional - negates the additional 1/2" headroom requirement if not selected |

The new Counter Fire Door is available in manual push up and manual crank operation, as well as tube and chassis operators. FireGard (thermal activation) and AlarmGard (electrical activation) closing systems are also available on the new Counter Fire Door.

**Information is accurate for most configurations.*

COUNTER FIRE DOOR COMPARISON CHART

Models ERC10 & ERC11 (SmokeShield®)



**Previous
Counter
Fire
Door**

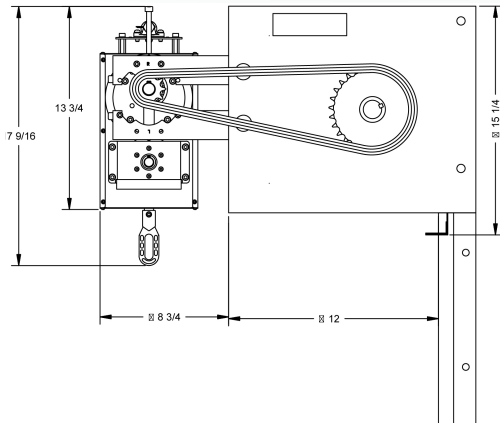
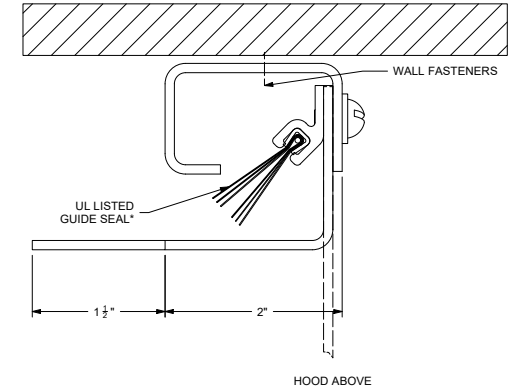
Visibly
Mounted
to Exterior
of Guides

VS

UL Listed
Smoke Seal

**New
Counter
Fire
Door***

Hidden /
Mounted
to Interior
of Guides



15 1/4"

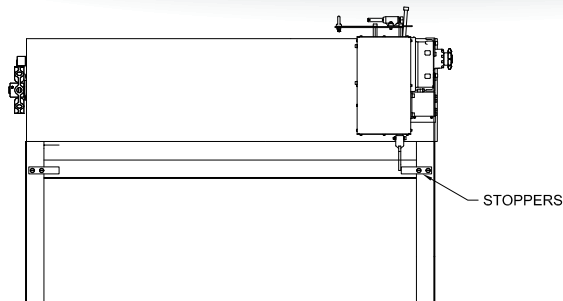
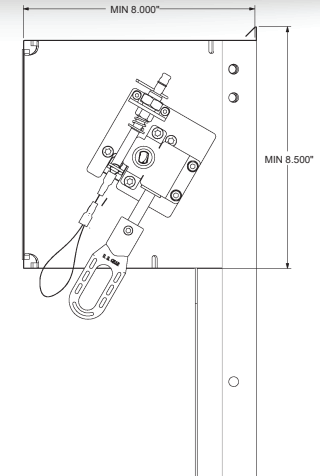
20 3/4"

FireGard
Headroom

FireGard
BackRoom

8 1/2"

8"



Stops
Exposed
below Hood

Bottom Bar /
Door Stops

Flush
with
Hood

BOTTOM BAR FLUSH WITH HEADBOX,
DIM = 0.500"
WITH
OPTIONAL
ASTRAGAL

