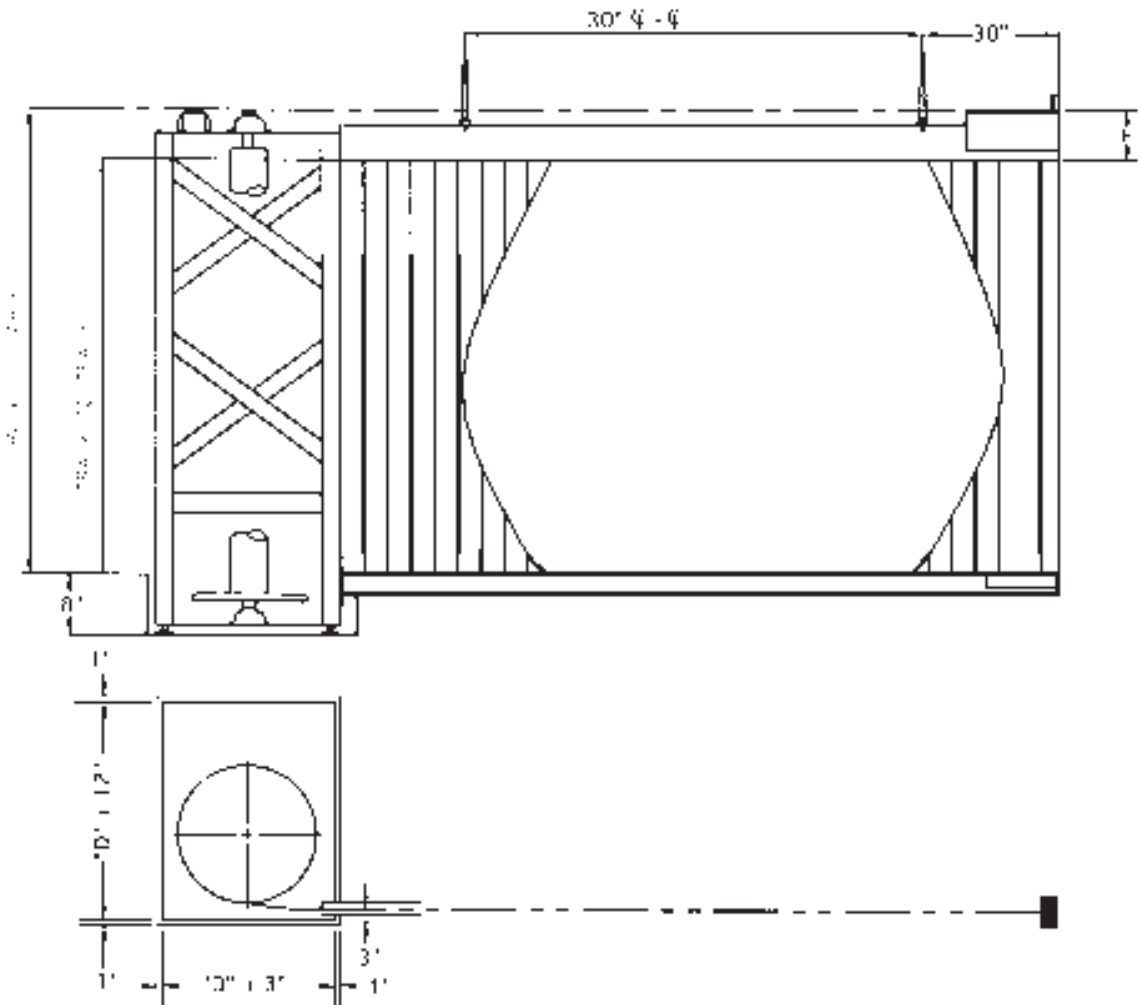


### Side Coiling Closures - Type SC-2 - Crank



Grille Pattern 5014-M9/5015	Width of Opening Slat No. 4	Wood Slat	Dimensions	
			D	F
16'	14'	12'	18"	7½"
22'	20'	18'	20"	7½"
29'	26'	24'	22"	7½"
36'	33'	31'	24"	8"
44'	41'	38'	26"	8"
53'	49'	45'	28"	8"
62'	58'	53'	30"	9"
72'	67'	62'	32"	9"
83'	78'	70'	34"	10"
96'	89'	80'	36"	10"
Consult Factory	101'	90'	38"	11"
	113'	100'	40"	11"



Full size jamb and bottom bar details are available in the back of this section.

Revised: June 15, 2000

# Side Coiling Closures - Type SC-2 - Crank

## 1.0 GENERAL

### 1.1 Summary

- A. All Side Coiling [Doors] [Grilles] shall be as manufactured by The Cookson Company, Phoenix, Arizona. Furnished materials shall include all curtains, tracks, operating mechanisms and any special features.
- B. Work not to be included by The Cookson Company includes the design of, material for and preparation of openings but not limited to structural or miscellaneous iron work, access panels, finish painting, electrical wiring, conduit and disconnect switches.
- C. All Cookson Side Coiling [Doors] [Grilles] shall be designed to a standard maximum of 6 cycles per day.

## 2.0 PRODUCTS

### 2.1 Materials

- A. *The door curtain shall consist of interconnected No. 4 [galvanized steel] [stainless steel] [aluminum] slats (measuring 2-3/4" high by 3/4" deep) as designated by The Cookson Company. The finish on the [stainless steel slats shall be #4] [aluminum slats shall be {mill} {204-R1 clear anodized} {bronze anodized} {black anodized} finish] [steel slats shall be the Cookson FinalCote finish consisting of the following:*
  - 1. *Hot dipped galvanized G-90 coating consistent with ASTM A-525*
  - 2. *Bonderized coating for prime coat adhesion*
  - 3. *Corrosion inhibiting primer - .2 mils per side*
  - 4. *Thermo-setting tan polyester top coat with a minimum thickness of .6 mils each side*
- A. *The door curtain shall consist of interconnected double rabbited wood slats (measuring 1-5/16" high by 3/4" deep) and shall be made of [Oak] [Birch] [Douglas Fir]. The door curtain shall be unfinished.*

- A. *The grille curtain shall be Pattern [5014-M9 ] [5015] constructed of 5/16" diameter horizontal [steel] [stainless steel] [aluminum] rods on 1-1/2" centers with vertical connecting links 9" on center. The finish on the rods shall be a [galvanized zinc coating] [#2B stainless steel] [{mill} {204-R1 clear anodized} {bronze anodized} {black anodized} aluminum finish] and the links shall match the finish of the rods. Galvanized steel grilles shall receive finish painting by others to inhibit corrosion and rust.*

- B. *The top track shall consist of 3" high by 1-3/4" deep extruded aluminum channel mechanically attached to a support angle with provisions for take-up bolts to compensate for a maximum deflection of 1/2".*
- C. *The bottom track shall consist of [an extruded aluminum channel installed in a 7" wide by 4" deep opening for interior use] [a channel fabricated from steel installed in a 11" wide by 4" deep opening for exterior use].*
- D. *The coil box shall be a steel frame enclosure containing the operating mechanism, the supporting disk and the drum around which the curtain will coil.*

### 2.2 Operation

- A. *Crank operated [doors] [grilles] shall open and close with a maximum of 30 pounds of effort operated by cranking in the [door] [grille] with a removable hand crank. This type of operation shall not be used for closures over twenty-five (25) feet in length or where there is frequent usage or curves.*

## 3.0 EXECUTION

### 3.1 Installation

- A. *All Cookson Side Coiling [Doors] [Grilles] shall be installed by an authorized Cookson Distributor.*

### 3.2 Warranty

- A. *All Cookson Side Coiling [Doors] [Grilles] shall be warranted for a period of twelve (12) months from the time of shipment against defects in workmanship and materials.*